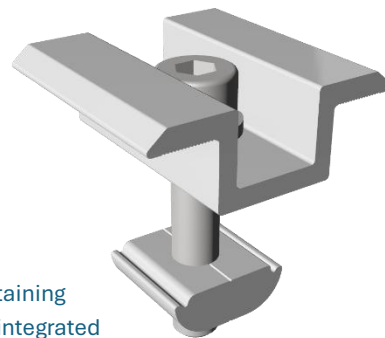


## ROOFTOP MID-CLAMPS / INTER-CLAMPS



### MID-CLAMPS / INTER-CLAMPS

Mid-clamps provide a secure and reliable connection between adjacent PV modules, maintaining consistent clamping pressure to ensure long-term system stability. Select versions feature integrated bonding pins for electrical continuity, helping to simplify earthing and bonding across the array.

Application	Clamps two PV panels side by side on full rail or short rail systems; bonding versions also provide an electrical connection between panels.
Material	Aluminium 6005-T5 / 6063-T6, SUS304
Product Type	Module Clamps
Recommended Torque	18 Nm (unless otherwise specified by the PV module supplier)
Nett resistance on bonding pins	0.05-0.07 Ohm

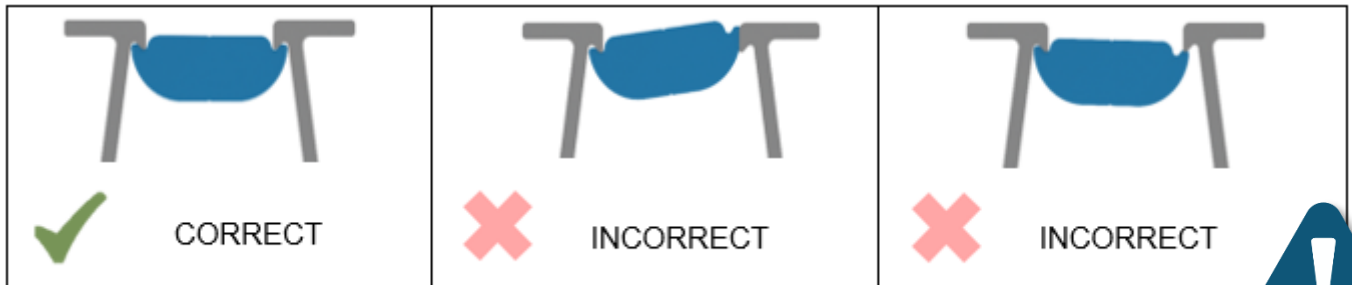
### Available Options:

Clamp code	Clamps length	Fastener	Finish	Bonding pins per side
LM-IC30-GP1-BLACK-RNW	40mm	Cap screw M8x40mm	Powder coated (black)	One
LM-IC30-GP1-RNW	40mm	Cap screw M8x40mm	Anodised	One
LM-IC30-GP1-RNW-01	50mm	Cap screw M8x40mm	Anodised	One
LM-IC30-GP-RNW-01	50mm	Cap screw M8x40mm	Anodised	Two
LM-IC30-RNW	40mm	Cap screw M8x40mm	Anodised	None
LM-IC35-GP1-RNW	40mm	Cap screw M8x45	Anodised	One
LM-IC35-GP1-RNW-01	50mm	Cap screw M8x45	Anodised	One
LM-IC35-GP-RNW-01	50mm	Cap screw M8x45	Anodised	Two
LM-IC35-RNW	40mm	Cap screw M8x45	Anodised	None
LM-IC40-GP-RNW	40mm	Cap screw M8x50	Anodised	Two
LM-IC40-RNW	40mm	Cap screw M8x50	Anodised	None
LM-IC-BARE	40mm	Not included	Anodised	None
LM-IC-BARE-01	50mm	Not included	Anodised	None
LM-IC-BLACK-BARE-01	50mm	Not included	Powder coated (black)	None
LM-IC-GP1-BARE	40mm	Not included	Anodised	One
LM-IC-GP1-BARE-01	50mm	Not included	Anodised	One
LM-IC-GP1-BLACK-BARE-01	50mm	Not included	Powder coated (black)	One
LM-IC-GP2-BLACK-BARE-01	50mm	Not included	Powder coated (black)	Two
LM-IC-GP-BARE	40mm	Not included	Anodised	Two
LM-IC-GP-BARE-01	50mm	Not included	Anodised	Two
LMK-IC30-RNW	40mm	Cap screw M8x40mm	Mill or Tumbled	None
LMK-IC30-RNW-01	50mm	Cap screw M8x40mm	Mill or Tumbled	None
LMK-IC35-RNW	40mm	Cap screw M8x45	Mill or Tumbled	None
LMK-IC35-RNW-01	50mm	Cap screw M8x45	Mill or Tumbled	None

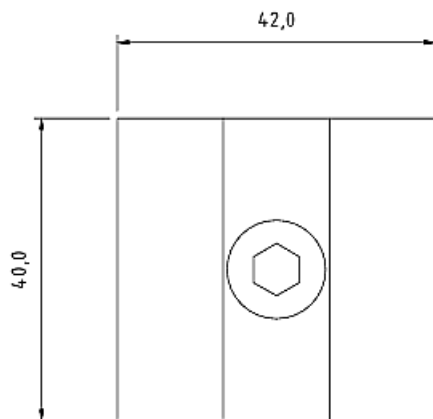
### Additional Information

- All pin-less clamps are compatible with LM-SGW (square grounding washer) and LM-CGW (Circular grounding washer)
- Powder coating can be done in a variety of colours
- '-01' Variants measure 50 mm, versus the standard 40 mm.

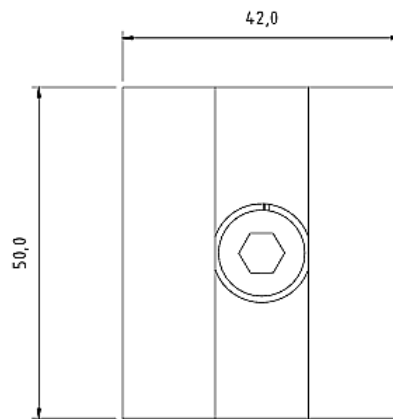
### Rail-nut Seating



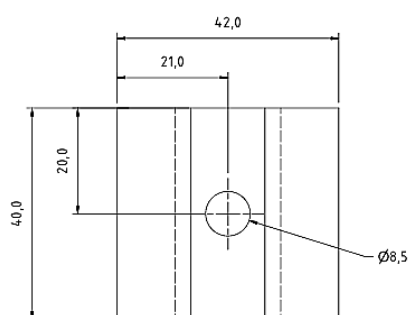
### Standard Clamp



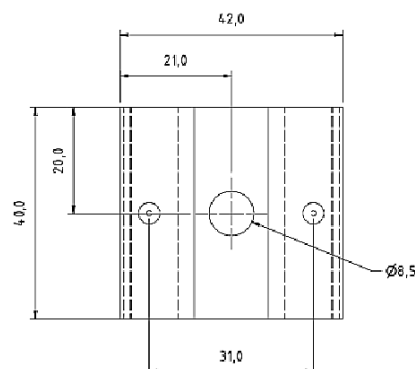
### '-01' Variants:



### Standard Version:



### Single Pinned Version



### Double Pinned Version:

