

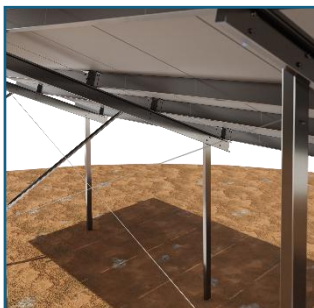
FIXED GROUND MOUNT STEELCORE



Superior Strength, Exceptional Value

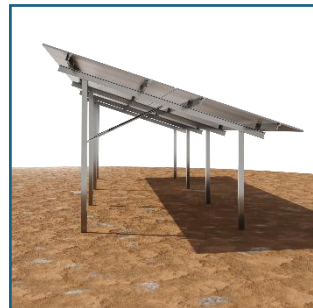
Crafted exclusively from high-grade steel, offering the utmost in durability and cost-effectiveness.

Application	Fixed Tilt Ground Mount
Module	Portrait (preferred/cost-effective) and Landscape
Module Layout	<ul style="list-style-type: none"> Portrait: 2V – 3V panels (angle dependent) Landscape: 4H – 5H panels (angle dependent)
Module Inclination	<ul style="list-style-type: none"> 2V / 4H: 0 – 25 degrees 3V / 5H: 0 – 15 degrees
Table Length	Up to 45m (preferred Max)
Support Spacing	<ul style="list-style-type: none"> Based on calculations / loading of the area Up to 4000 mm (project-specific) End overhang of up to 1200 mm
Anchoring Method: Ground Screw Method	Direct ramming (preferred) *Drill and concrete are optional for difficult soil conditions.
Standards	<ul style="list-style-type: none"> SANS 10160: 1-7 Structural loading design SANS 10162: 1-2 Structural Steel design SANS 121: Hot dip galvanised coatings Eurocode 9-P1 Design of aluminium structure
Material	<ul style="list-style-type: none"> Purlins: Various coatings available (project specific) Rafters: Various coatings available (project specific) Piles: Various coatings available (project specific) Fixations: Stainless Steel (SUS304) * (SUS316) & HDG available <p>*HDG and various grades of pre-galvanised material available.</p>
Local Content	Local content up to 90% if required (project-specific)
Warranty	10 year standard warranty



Customisable Design for Any Site

Engineered for versatility, ensuring optimal performance and adaptability, providing the perfect fit for any project



Engineered for Easy Installation

With intuitive assembly and minimal tools required, even large-scale projects can be completed quickly and efficiently