

CARPORT ECONO-MAX



Cost Effective

Elevate your solar investment with our cost-efficient mounting structure, designed for value and durability.

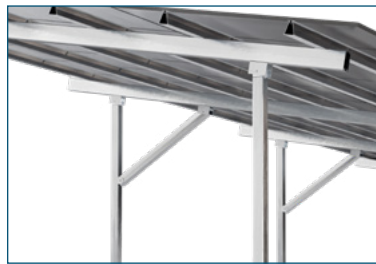
Application	Carport
Module Orientation	Portrait (preferred/cost-effective) and Landscape
Module Layout	Portrait: 3V panels (single access) Portrait: 5V panels (double access) Landscape: 4H - 5H panels (single access) Landscape: 8H - 9H panels (double access) Custom
Module Inclination	Single access: 0 - 10 degrees Double access: 0 - 8 degrees
Table Length	Site dependent
Support Spacing	5000mm to support spacing for double parking bays as well as 7500mm option End overhang of up to 1700mm
Anchoring Method	Chemical anchor, M16 rods, fixations, and typical foundation designs are provided Pre-cast/foundations are not provided
Standards	SANS 10160 - 1 - 7 Structural loading design SANS 10162 - 1, 2 Structural steel design SANS 121 - Hot dip galvanised coatings Eurocode 9 - P1 Design of aluminium structure
Material	Purlins: Aluminium (6063 T6)/(6005 T5) Rafters: Aluminium (6063 T6)/(6005 T5) Columns: I-beam (S355) Fixations: Stainless steel (SUS304) *(SUS316) available *Various coatings are available, including anodising, hot dip galvanising, powder coating, and paint.
Local Content	Local content up to 90% if required (project specific)
Warranty	10 years standard

Glossary : (*) Customizable



EconoDurable Design

The economical choice for lasting protection, our Econo-Max solar carport structure boast a simple design that's easy to assemble and built to last.



Simple and Robust

Experience the ease of assembly with our straightforward and robust solar carport structure.