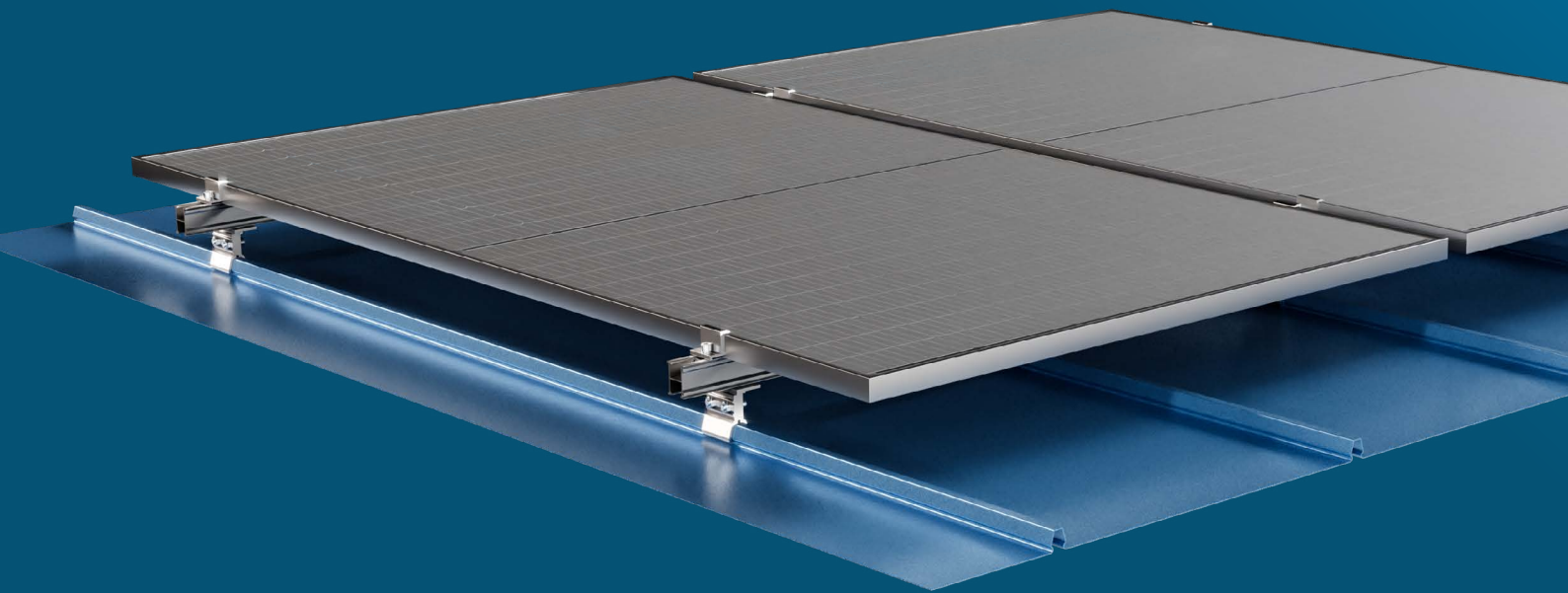


Explore the versatility of our Concealed Fix product category, featuring innovative clamps designed to securely mount PV panels on a variety of non-penetrative sheet profiles. Our short rails are engineered for a secure fit and ease of use in landscape orientation, ensuring seamless integration. Additionally, this category offers full rail solutions for common round and bulbous standing seam profiles, among others. With their slotted, flat-top designs, these clamps provide robust support while enhancing the aesthetic appeal of your panel array.

# CONCEALED FIX

### **Versatile Solutions for Secure Rooftop Mounting**

Concealed fix sheet clamps offer robust and discreet solutions for securing PV panels while maintaining the aesthetics of your roof. Compatible with a wide range of roof sheet profiles, including Brownbuilt, Craft-lock, Klip-lok, and Saflok 700, these clamps provide continuous support and enhanced stability for your rooftop installation.



### **Custom Roofing Profile Options**

Concealed fix sheet clamps for short rail systems like Springlok, Klip-lok 700, Saflok 700, and Saflok 410 offer flexibility. Specialized clamps for Novotexi440, Diamondek, Zip-tek 420, and Kalzip fit various designs. Engineered for durability, these clamps suit modern roofing projects requiring both function and aesthetics.



**GENERIC STANDING SEAM SHEET CLAMP  
WITH GRUB SCREWS**

## Rooftop Solutions - Concealed Fix **LM-SSG**

Lumax's LM-SSG Rooftop Solution is a versatile clamp designed for seamless integration with Craft-Lock, Diamondek, Brownbuilt, and similar concealed fix metal roofs. Featuring generic vertical and horizontal clamping, it attaches without sheet penetration, offering easy installation.

Crafted from durable materials with metallurgical compatibility with most metal roofs, the LM-SSG provides reliable support for PV module mounting. Its smooth rounded tip set screws prevent damage to protective coatings of roof sheets, ensuring long-term integrity.



# CHARACTERISTICS



## Application

Craft-lock (Clotan Steel)  
Diamondek (Youngman)  
Brownbuilt (GRS)  
and various other similar roof types



## Features

- Attaches to various popular concealed fix metal roofs without sheet penetration
- Generic vertical and horizontal clamping
- Durable materials
- Metallurgical compatibility with most metal roofs
- PV module mounting on rails or direct in conjunction with LM-SRL-M8+M6 or LM-LM-8
- Smooth rounded tip set screws do not damage protective coating of roof sheet



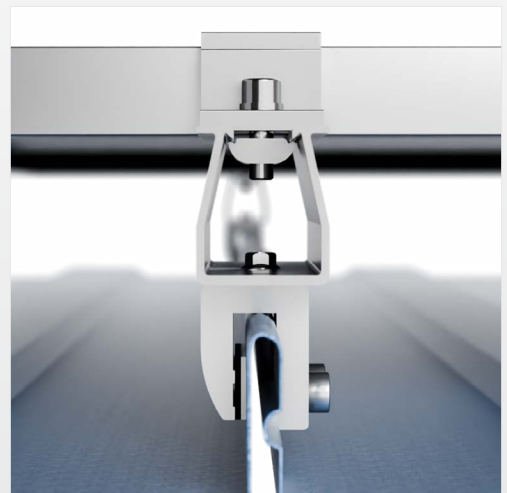
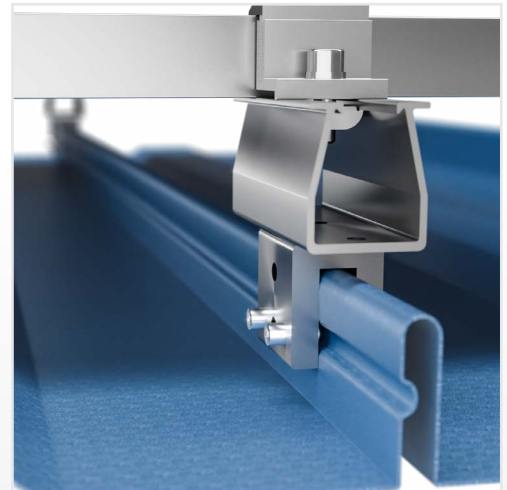
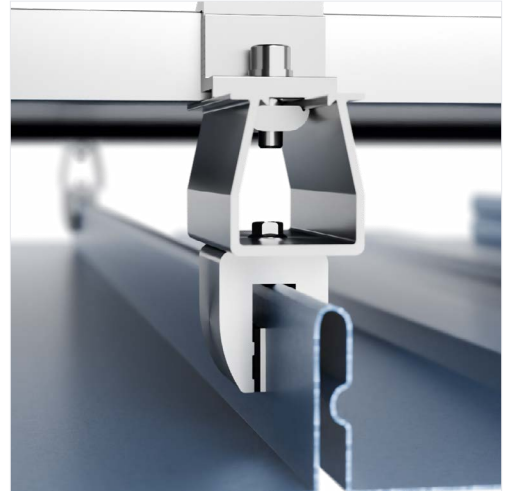
## Specifications

- **Material:** AL 6005-T5, SUS304
- Anodised > 13 µm



## Dimensions

H 45 mm x L 45 mm x W 33 mm



Click or scan for full TDS



| Product Code:  | Dimensions:     | Material:  | Finish:  |
|----------------|-----------------|------------|----------|
| LM-KS-700-F    | 68 x 50 x 52 mm | AL 6005-T5 | Anodised |
| LM-KS-700-F-50 | 55 x 45 x 50 mm | AL 6005-T5 | Anodised |



**A SLOTTED FLAT TOP CLAMP  
FOR KLIP-LOK / SAFLOK 700**

## Rooftop Solutions - Concealed Fix **LMK-KS-700L-F**

Lumax Energy's LM-KS-700L-F Rooftop Solution is a robust and reliable system, designed to provide peace of mind for your solar panel installations. Featuring a slotted flat-top short rail design, it is fully compatible with a wide range of common Klip-lok profiles. Constructed from durable materials, this solution

offers exceptional performance and long-lasting durability. The full-rail mounting system ensures excellent ventilation while maintaining compatibility with accessories like cable trays and walkways, making it an ideal choice for efficient and reliable rooftop installations.



# CHARACTERISTICS



## Application

- Saflok 700 (Safintra)
- Saflok 410 (Safintra)
- Klip-lok 700 (GRS)
- Klip-lok 406 (GRS)
- Klip-tite (GRS)



## Features

- Fast and easy install
- Attaches to popular concealed fix metal roofs without sheet penetration
- Non-corrosive, durable materials
- Metallurgical compatibility with most metal roofs
- Full-rail mounting for PV panels
- Good ventilation, 100 mm + clearance between panel frame and roof sheet
- Fixation of cable trays, walkways and other accessories
- Resistant to over-tightening as bolts and nuts are stainless steel (no aluminium thread)



## Specifications

- **LMK-KS-700L-F Material:** AL 6063-T6, SUS304
- **LM-KS-700-F Material:** AL 6005-T5, SUS304
- Anodised > 13 µm
- **LM-KS-700-F-50 Material:** AL 6005-T5, SUS304
- Anodised > 13 µm

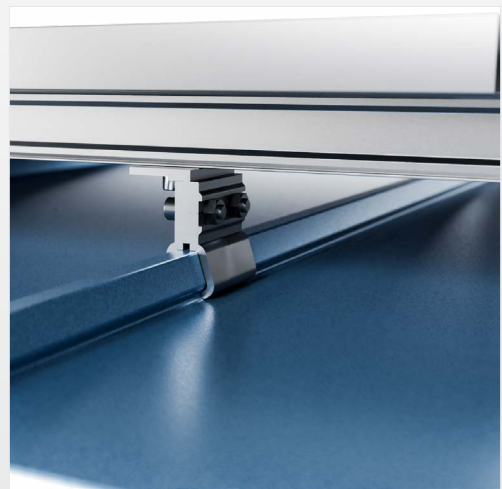


## Dimensions

- **LMK-KS-700L-F:** H 68 mm x L 50 mm x W 52 mm
- **LMK-KS-700-F:** H 68 mm x L 50 mm x W 52 mm
- **LMK-KS-700-F-50:** H 55 mm x L 45 mm x W 55 mm



Click or scan for full TDS





| Product Code: | Dimensions:     | Material:  | Finish:  |
|---------------|-----------------|------------|----------|
| LM-KS-700     | 87 x 80 x 45 mm | AL 6005-T5 | Anodised |



**DOUBLE BOLTED SHORT RAIL FOR  
KLIP-LOK / SAFLOK 700 SHEETING**

## Rooftop Solutions - Concealed Fix **LMK-KS-700L**

The LMK-KS-700L is a concealed fix mount specifically designed for Klip-lok roofing systems, offering a secure attachment without penetrating the roof sheet. Crafted from high-grade AL 6063 T6 aluminum, this mount provides a robust yet lightweight solution.

Its anodised finish enhances environmental protection, ensuring durability in various conditions. The LMK-KS-700L is also designed for ease of installation, and can be easily removed for maintenance if necessary.



# CHARACTERISTICS



## Application

- Saflok 700 (Safintra)
- Saflok 410 (Safintra)
- Klip-lok 700 (GRS)
- Klip-lok 406 (GRS)
- Klip-tite (GRS)



## Features

- No roof penetration required
- Simple installation with double bolting for enhanced stability
- Anodised finish provides extra protection against environmental elements
- Constructed from high-quality aluminum
- Removable for easy maintenance



## Specifications

- **LMK-KS-700L-F Material:** AL 6063-T6, SUS304
- **LM-KS-700 Material:** AL 6005-T5, SUS304
- Anodised > 13 µm



## Dimensions

- **LMK-KS-700L:** H 87 mm x L 80 mm x W 45 mm
- **LM-KS-700:** H 87 mm x L 80 mm x W 45 mm



Click or scan for full TDS

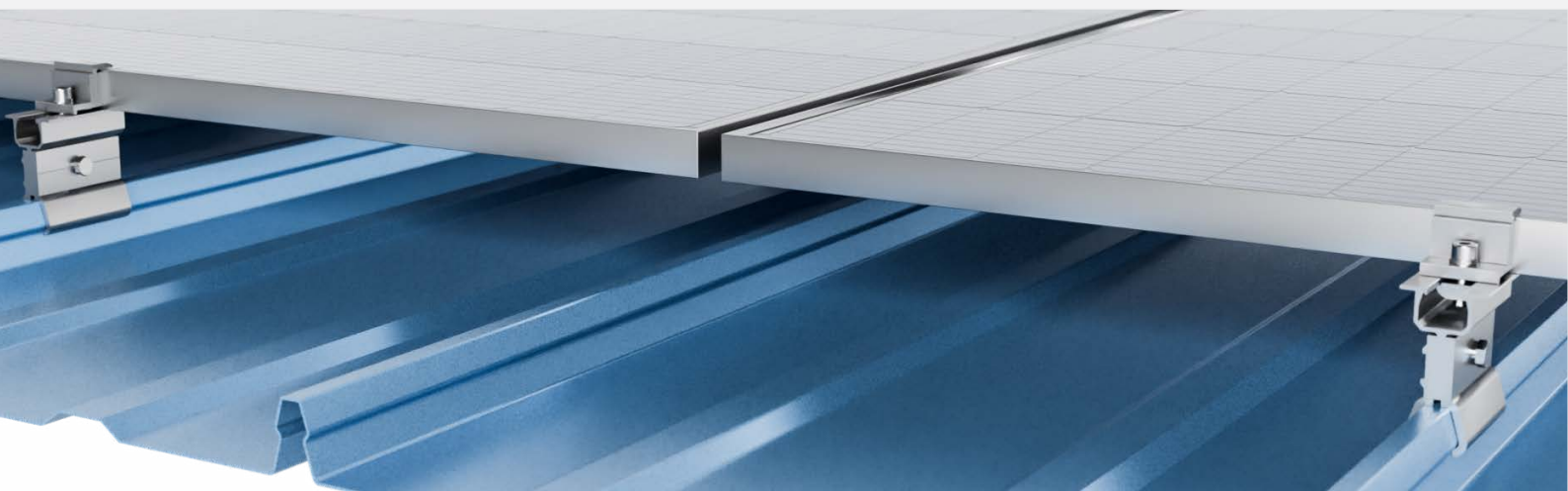


**SINGLE BOLTED SHORT RAIL FOR  
KLIP-LOK / SAFLOK 700 SHEETING**

## Rooftop Solutions - Concealed Fix **LM-KS-700-1**

The LM-KS-700-1 clamp is designed to preserve the integrity of the roof sheet by not penetrating it. It is easy to install, requiring only one bolt, and is anodised to provide additional environmental protection.

Made from high-grade aluminum, the clamp offers exceptional durability. Additionally, it is removable, ensuring convenience for maintenance tasks.



# CHARACTERISTICS



## Application

- Saflok 700 (Safintra)
- Saflok 410 (Safintra)
- Klip-lok 700 (GRS)
- Klip-lok 406 (GRS)
- Klip-tite (GRS)



## Features

- Does not penetrate the roof sheet, preserving its integrity
- Easy to install with only one bolt required
- Anodised for additional environmental protection
- Made from high-grade aluminum for durability
- Removable for maintenance convenience



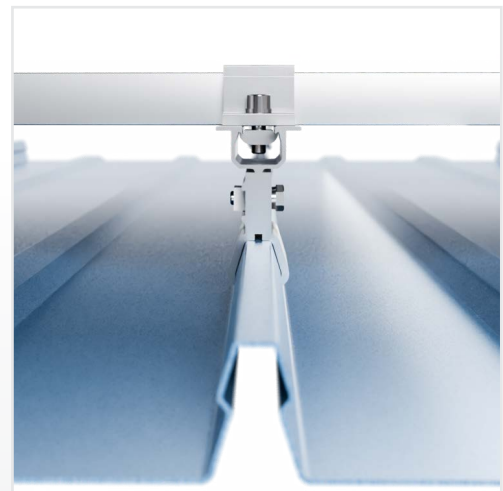
## Specifications

- **Material:** AL 6005-T5, SUS304
- Anodised > 13 µm



## Dimensions

H 87 mm x L 80 mm x W 45 mm



Click or scan for full TDS



**SLOTTED FLAT TOP SEAM CLAMP  
FOR NOVOTEXI SHEETING**

## Rooftop Solutions - Concealed Fix **LM-NTC**

Lumax's LM-NTC Rooftop Clamp is designed for reliability and ease of installation on concealed fix metal roofs like the Macsteel Novotexi 440. Crafted from durable aluminum with stainless steel bolts, it offers metallurgical compatibility and

flexible rail mounting options for PV panels. With its lightweight design and efficient ventilation, this clamp is a versatile solution for a wide range of rooftop applications, delivering both high performance and convenience.



# CHARACTERISTICS



## Application

Novotexi 440



## Features

- Fast and easy install
- Designed to work specifically with Novotexi sheeting
- Durable materials
- Metallurgical compatibility with most metal roofs
- Direct mounting or rail mounting methods supported for PV panels
- Good ventilation
- Resistant to over-tightening as bolts and nuts are stainless steel (no aluminium thread)



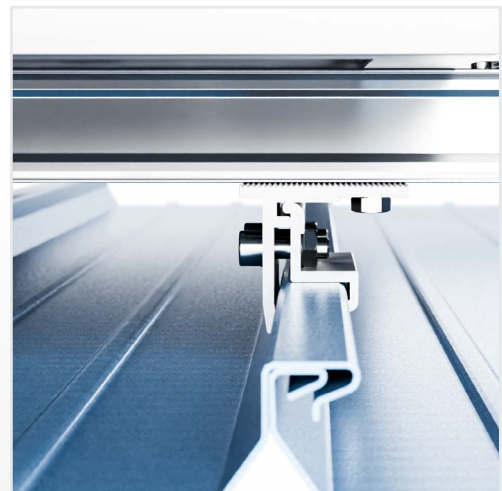
## Specifications

- **Material:** AL 6005-T5, SUS304
- Anodised > 13 µm



## Dimensions

H 53 mm x L 80 mm x W 60 mm



Click or scan for full TDS

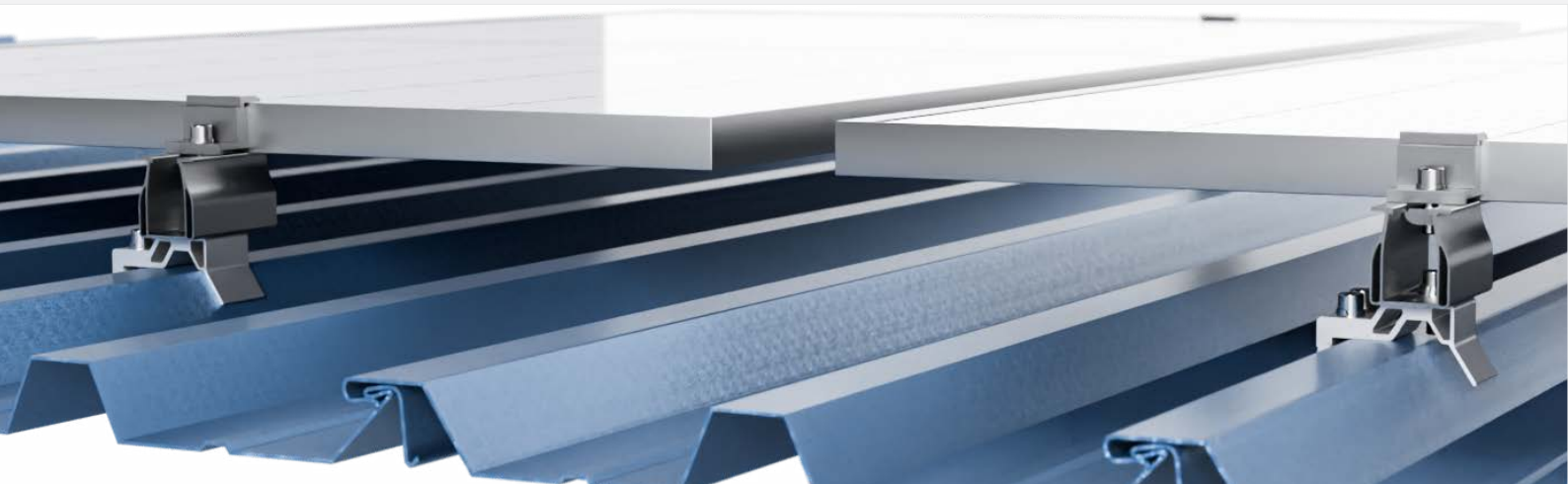


**CRAFT LOCK SHEET CLAMP**

## Rooftop Solutions - Concealed Fix **LM-CLC**

The LM-CLC Slotted Flat Top Seam Clamp is a highly versatile solution designed for both full rail and short rail applications. This innovative clamp ensures no penetration of the roof sheet, maintaining the integrity of the roofing system while offering a very high pull-off value for secure attachment. Installation is straightforward with only two bolts required, making it efficient

and user-friendly. Additionally, the LM-CLC clamp comes anodised, providing enhanced environmental protection and durability against harsh weather conditions. This combination of features makes it an ideal choice for reliable and long-lasting roof mounting solutions.



# CHARACTERISTICS



## Application

Craft-lock (Clotan Steel)



## Features

- Versatile (can be used as full rail or short rail solution)
- Does not penetrate the roof sheet.
- Very high pull-off value
- Easy to install (2 bolts only) supplied anodised for additional environmental protection



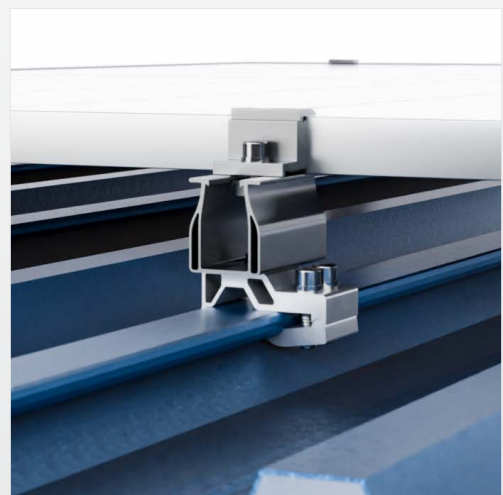
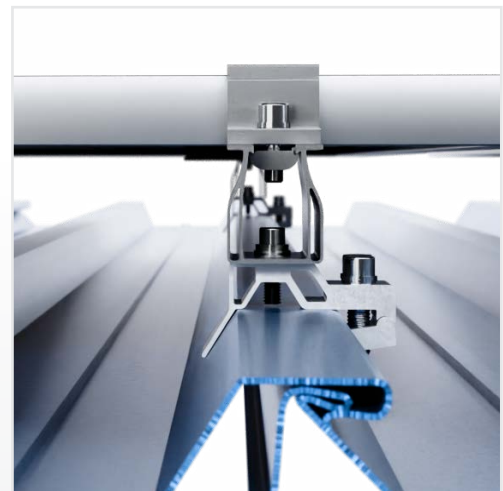
## Specifications

- **Material:** AL 6005-T5, SUS304
- Anodised > 13 µm



## Dimensions

H 40 mm x L 82 mm x W 40 mm



Click or scan for full TDS

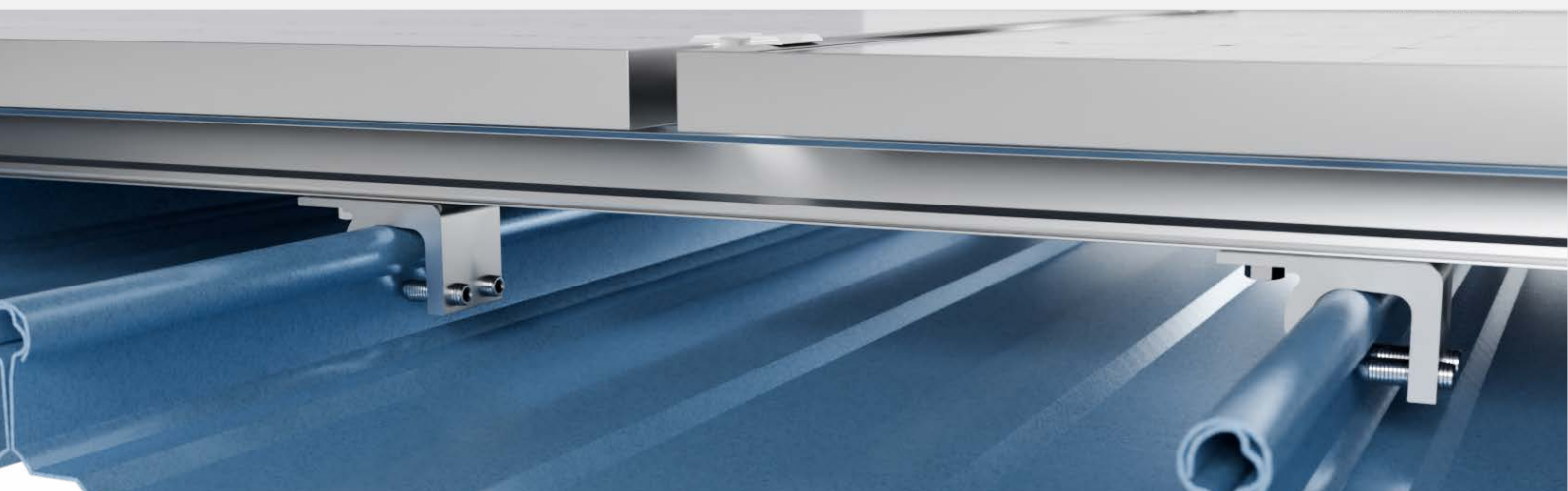


**SLOTTED FLAT TOP SHORT RAIL FOR ROUND  
STANDING SEAM SHEET WITH GRUB SCREWS**

## Rooftop Solutions - Concealed Fix **LM-ZTC**

The LM-ZTC is an exceptionally versatile clamp designed to suit both full rail and short rail applications, making it adaptable to a wide range of roof types. It simplifies installation with just two grub screws and is thoughtfully engineered to create dimples in the roof sheet without causing damage. This design ensures a secure fit while preserving the integrity of the roof.

Additionally, the LM-ZTC allows for easy access during maintenance, facilitating convenient upkeep. Constructed from high-quality AL 6005 T5 and SUS304 stainless steel, it combines premium materials to offer enhanced durability and long-lasting performance.



# CHARACTERISTICS



## Application

- Diamondek
- Brownbuilt
- Rheinzink
- Zip-tek
- Newlok
- Kalzip



## Features

- Suitable for both full rail and short rail applications
- Works with a variety of roof types
- Requires only two grub screws for setup
- Designed to create dimples in the roof sheet without causing damage
- Allows for easy maintenance access
- Made from premium materials for enhanced durability



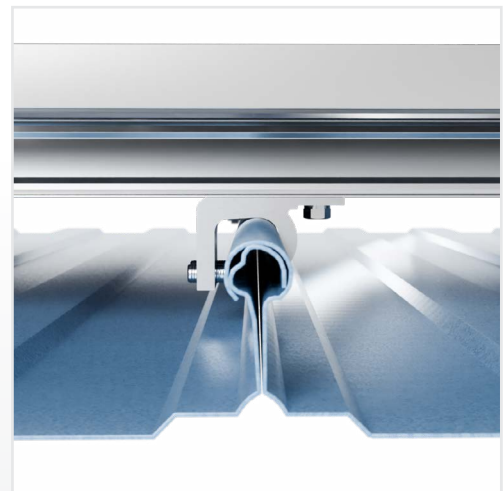
## Specifications

- **Material:** AL 6005-T5, SUS304
- Anodised > 13 µm



## Dimensions

H 49 mm x L 78 mm x W 45 mm



Click or scan for full TDS



SHORT RAIL FOR SPRINGLOK / KLIP-LOK /  
SAFLOK 700 SHEET - LANDSCAPE

## Rooftop Solutions - Concealed Fix **LM-SKS**

The LM-SKS is a high-performance clamp used with Springlok systems, ensuring reliable compatibility and effectiveness. It features spacers that can be supplied to prevent over-torquing, enhancing installation precision. The clamp provides excellent height clearance and is easy to install, requiring only two bolts for secure attachment.

Its versatility allows it to work with most Klip-lok type profiles, making it a flexible solution for various roofing applications. Constructed from AL 6005 T5 and SUS304 stainless steel, the LM-SKS combines durability with strength, while the spacers are made from AL 6063 T6 for added robustness.



# CHARACTERISTICS



## Application

Klip-lok  
Springlok



## Features

- Approved by Youngman for use with Springlok systems
- Optional spacers available to prevent over-torquing
- Provides excellent height clearance
- Simple installation with just two bolts required



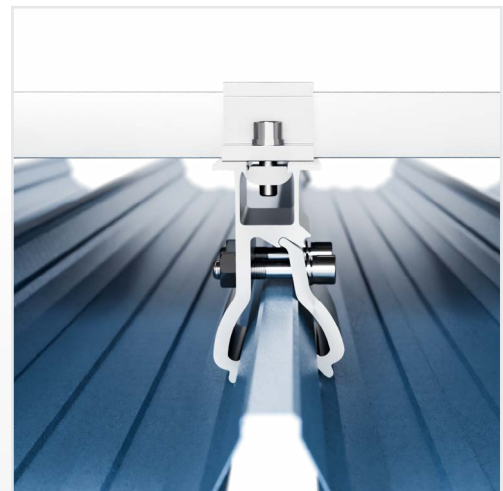
## Specifications

- **Material:** AL 6005-T5, SUS304
- **Spacer:** AL6063-T6
- Anodised > 13 µm



## Dimensions

H 93 mm x L 80 mm x W 45 mm



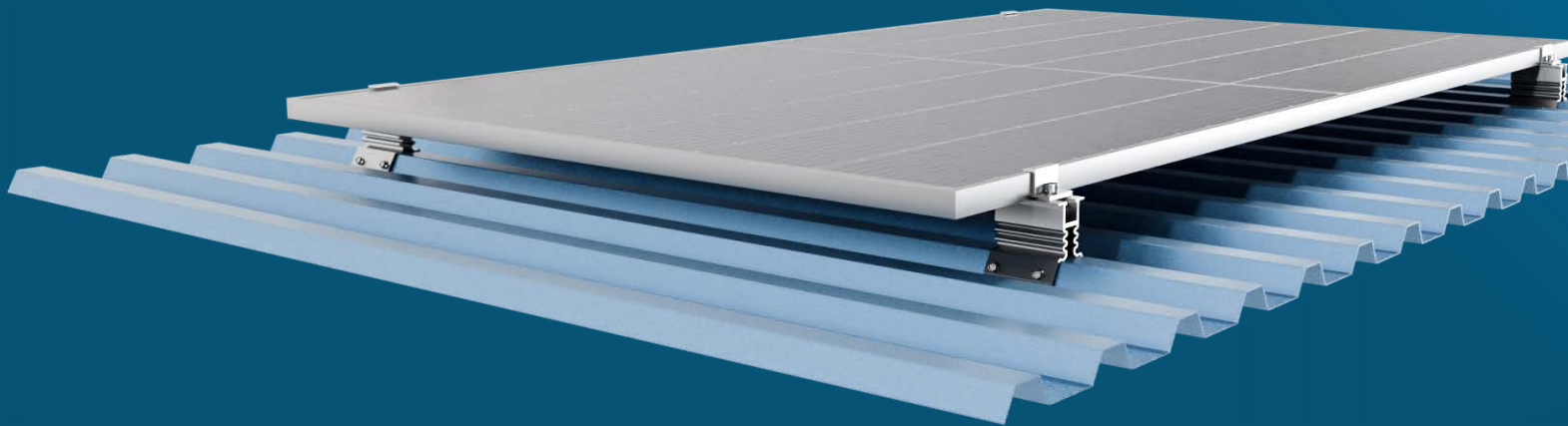
Click or scan for full TDS

**Our Pierced Fix systems are engineered to offer robust and versatile solutions for mounting solar equipment on a variety of rooftop profiles. Designed for applications with IBR and similar trapezoidal sheets, these systems feature components made from durable materials such as Aluminum 6005-T5, stainless steel SUS304, and EPDM or vulcanized elastomer for enhanced corrosion resistance and weatherproofing. With options for easy installation, high shear strength, and effective ventilation clearance, these systems include slotted flat top short rails and short rails with EPDM. They are compatible with various rail and clamp systems, ensuring flexibility and reliability in securing solar panels to trapezoidal and corrugated roofs.**

# PIERCED FIX

### **Robust Pierced Fix Solutions**

Lumax Energy's Pierced Fix systems offer reliable mounting for solar equipment on IBR and trapezoidal roof sheets. Built with durable materials like Aluminium 6005-T5, stainless steel, and EPDM layers, these systems provide excellent corrosion resistance and weatherproofing. With slotted short rails and secure clamps, they ensure flexibility, easy installation, and high shear strength for both residential and commercial rooftops.



### **Versatile Mounting Options**

Our systems suit various roof profiles, offering elevated designs and waterproofing. Compatible with IBR, trapezoidal, and corrugated sheets, they provide proper clearance, a sleek look, and strong load capacity. Advanced fastening ensures secure, lasting panel support.



**SLOTTED FLAT TOP SHORT RAIL FOR IBR WITH 35 WIDE CREST AND x 4 M6 SIDE MOUNTING HOLES - PORTRAIT**

## Rooftop Solutions - Pierced Fix **LM-TBR-VF**

Lumax Energy's LM-TBR-VF is a slotted flat top short rail designed for IBR with a 35-wide crest and four M6 side mounting holes, suitable for IBR 686 and similar trapezoidal sheets. Featuring pre-punched holes for easy installation and high holding strength due to shear force on screws, it's

ideal for rail installation on trapezoidal roofs. Crafted from durable, non-corrosive materials with an EPDM layer, LM-TBR-VF offers reliable performance. Compatible with LM-R42 rail and grounding washers, mid-, and end clamps, it is suitable for landscape and portrait orientation.



# CHARACTERISTICS



## Application

- IBR 686 and similar trapezoidal sheets
- Not applicable to all trapezoidal profiles



## Features

- Fast and easy install
- Pre-punched holes making for ease of installation
- Sheet penetration through vertical walls of sheet
- Shear force on screws results in very high holding strength Suitable for rail installation on trapezoidal roofs
- Durable, non-corrosive materials
- EPDM layer
- Compatible LM-R42 (top-bottom fix) rail, grounding washer, mid- and end clamps



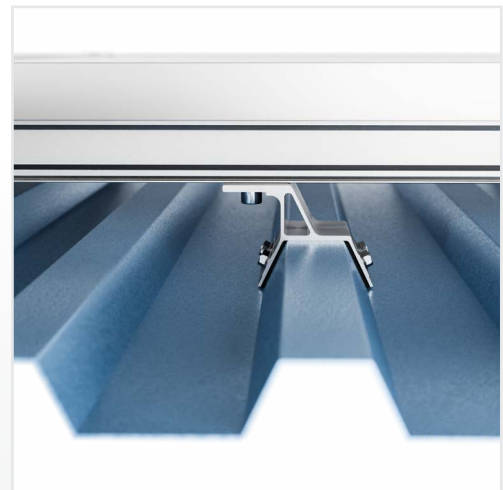
## Specifications

- **Material:** AL 6005-T5, SUS304, EPDM
- Anodised > 13 µm



## Dimensions

H 62 mm x L 55 mm x W 89 mm (33 mm above crest)



Click or scan for full TDS



| Product Code: | Dimensions:      | Material:  | Finish:  |
|---------------|------------------|------------|----------|
| LM-SRL-M6-E   | 50 x 100 x 40 mm | AL 6005-T5 | Anodised |

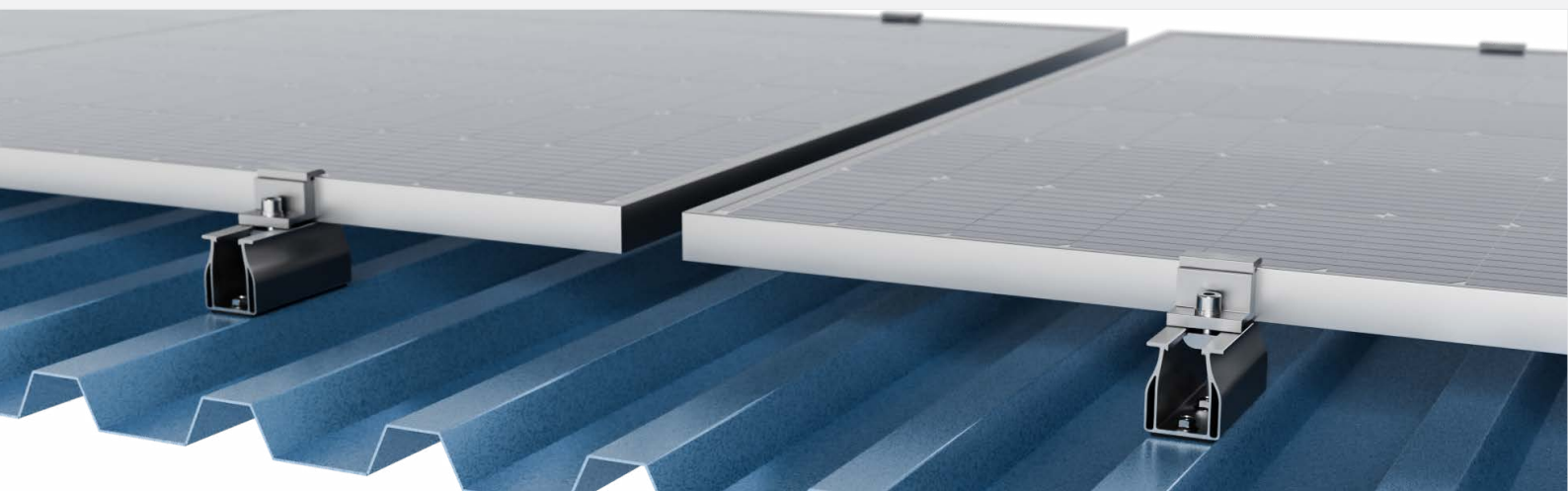


SHORT RAIL WITH EPDM FOR IBR SHEETING WITH 3 x M6 HOLES

## Rooftops Solutions - Pierced Fix **LMK-SRL-M6-E**

Lumax's LM-SLR-M6-E offers seamless installation on popular trapezoidal and IBR sheets. Crafted from durable, non-corrosive materials with an EPDM layer, it ensures longevity and reliability. Its compatibility with grounding washer, mid-, and

end clamps enhances its versatility for rooftop solar installations. Featuring aluminium 6005 T5, it ensures reliable performance over time, making it an ideal choice for residential, commercial, or industrial solar applications.



# CHARACTERISTICS



## Application

- Popular trapezoidal
- IBR sheets



## Features

- Crest fix on flat horizontal surface
- Ideal for landscape mounting
- Fast and easy install
- Durable, non-corrosive materials
- EPDM layer
- Compatible grounding washer, mid- and end clamps



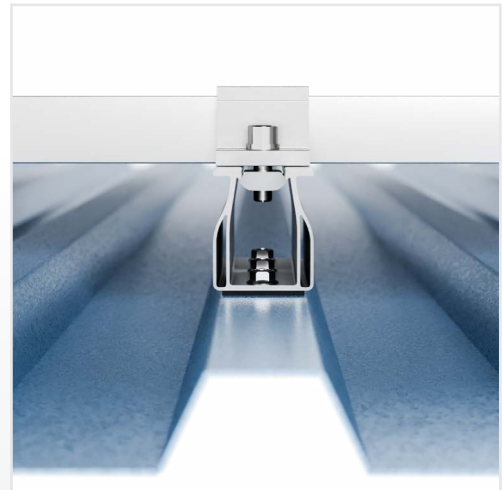
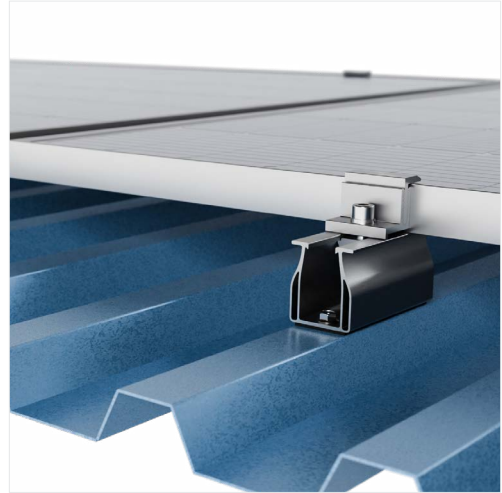
## Specifications

- **LMK-SRL-M6-E Material:** AL 6063-T6, EPDM
- **LM-SRL-M6-E Material:** AL 6005-T5, EPDM
- Anodised > 13 µm



## Dimensions

- **LMK-SRL-M6-E:** H 50 mm x L 100 mm x W 40 mm
- **LM-SRL-M6-E:** H 50 mm x L 100 mm x W 40 mm



Click or scan for full TDS



| Product Code: | Dimensions:      | Material:  | Finish:  |
|---------------|------------------|------------|----------|
| LM-SRL65-M6-E | 65 x 100 x 39 mm | AL 6005-T5 | Anodised |



SHORT RAIL WITH EPDM FOR THIN CREST  
IBR SHEETING WITH 3 x M6 HOLES - LANDSCAPE

## Rooftops Solutions - Pierced Fix **LMK-SRL65-M6-E**

The LM-SRL65-M6-E Pierced Fix (Thin Crest) IBR is designed for optimal solar panel installation, featuring a generous 100mm length for ample panel space. Crafted from durable AL 6063-T6 aluminum, it is anodised for enhanced corrosion resistance.

Its elevated design provides excellent sheet clearance, while the included EPDM gasket prevents leaks. Additionally, it comes pre-punched with M6 holes for easy screw installation, making it a reliable choice for secure mounting.



# CHARACTERISTICS



## Application

(Thin crest) IBR



## Features

- The 100 mm length provides ample space for solar panels, ensuring optimal installation
- An anodised finish offers exceptional corrosion resistance, enhancing the product's longevity
- The elevated design allows for excellent sheet clearance, improving overall performance
- An EPDM gasket is included to effectively prevent leaks, ensuring reliable sealing
- Pre-punched M6 holes facilitate easy and efficient installation of screws



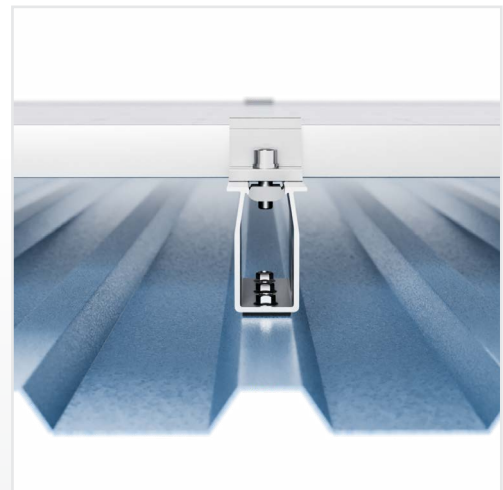
## Specifications

- **LMK-SRL65-M6-E Material:** AL 6063-T6, EPDM
- **LM-SRL65-M6-E Material:** AL 6005-T5, EPDM
- Anodised > 13 µm



## Dimensions

- **LMK-SRL65-M6-E:** H 50 mm x L 100 mm x W 40 mm
- **LM-SRL65-M6-E:** H 65 mm x L 100 mm x W 39 mm



Click or scan for full TDS



**SLOTTED FLAT TOP SHORT RAIL WITH EPDM FOR CORRUGATED SHEETING WITH 4 x M6 HOLES - PORTRAIT**

## Rooftops Solutions - Pierced Fix **LM-CRL-F**

Introducing the LM-CRL-F, a pierced fix solution expertly crafted for corrugated sheets. This short rail system, measuring (L) 80 x (W) 53 x (H) 70, is designed for easy transport and installation, making it perfect for a variety of on-site applications. Made from high-quality Aluminium 6005 T5, the LM-CRL-F offers durability and strength, ensuring reliable performance over

time. Its versatile design is compatible with most corrugated sheet profiles, providing a flexible mounting solution. The system also features a leak-preventing EPDM layer at the screw points, offering enhanced protection against water ingress. Additionally, the LM-CRL-F comes anodised for extra environmental protection, further extending its lifespan and resilience.



# CHARACTERISTICS



## Application

Corrugated sheets



## Features

- Features a leak-preventing EPDM layer where the screws are placed
- Versatile design compatible with most corrugated sheet profiles
- Anodised for enhanced environmental protection
- Pre-punched and slotted, eliminating the need for drilling
- Easy installation with just four screws



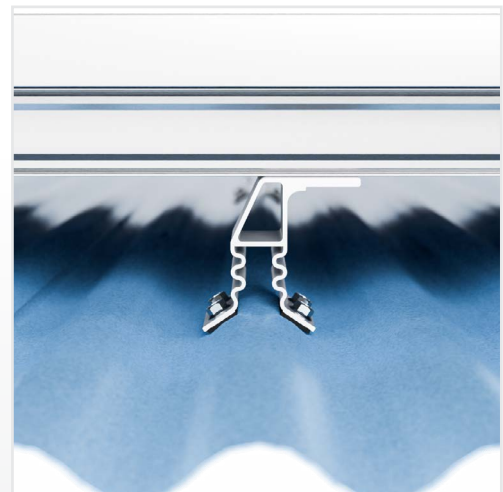
## Specifications

- **Material:** AL 6005-T5, EPDM
- Anodised > 13 µm



## Dimensions

L 55 mm x W 70 mm x H 75 mm



Click or scan for full TDS

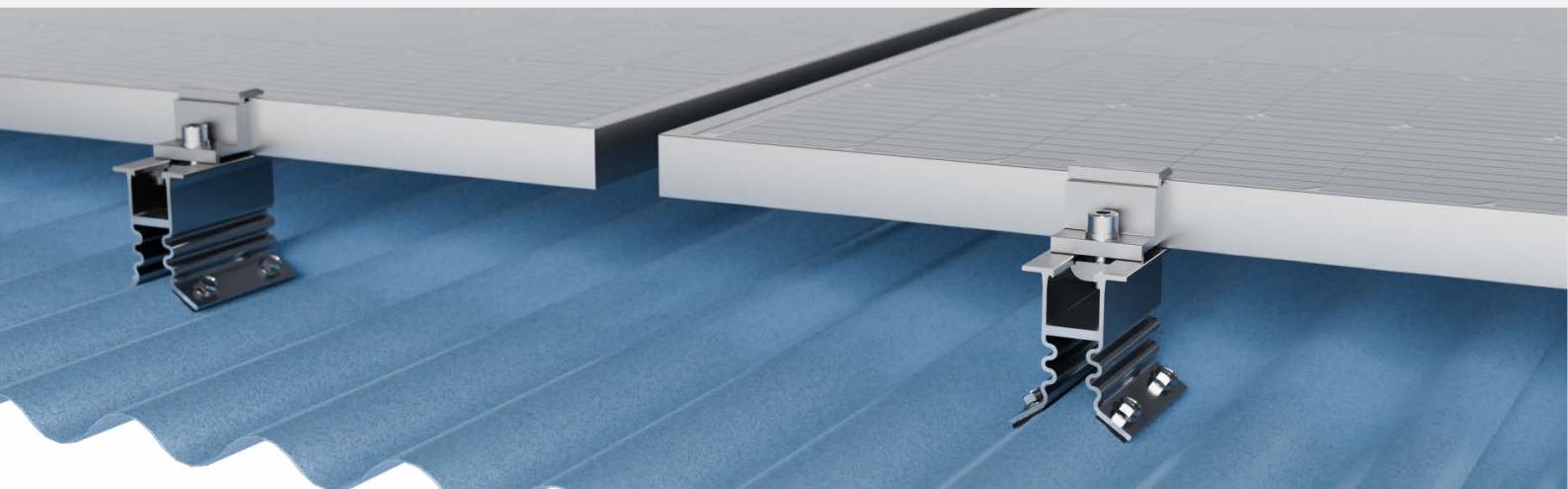


**SHORT RAIL WITH EPDM FOR CORRUGATED SHEETING WITH 4 x M6 HOLES - LANDSCAPE**

## Rooftops Solutions - Pierced Fix **LM-CRL**

Introducing the LM-CRL, a pierced fix solution specifically designed for corrugated sheets. This short rail system is easy to transport, making it ideal for on-site installations. Constructed from high-quality Aluminium 6005 T5, the LM-CRL is built to last and perform under various conditions. Its versatile design allows it to work seamlessly

with most corrugated sheet profiles, providing a reliable and adaptable solution. The LM-CRL also features a leak-preventing EPDM layer where the screws are inserted, ensuring enhanced protection against water ingress. Made from high-grade materials, this short rail solution offers both durability and efficiency for your mounting needs.



# CHARACTERISTICS



## Application

Corrugated sheets



## Features

- Compact and easy to transport, ideal for all short rails
- Versatile compatibility with most corrugated sheet profiles
- Constructed from high-grade materials for durability
- Includes a leak-preventing EPDM layer where screws are placed
- Anodised finish provides extra environmental protection



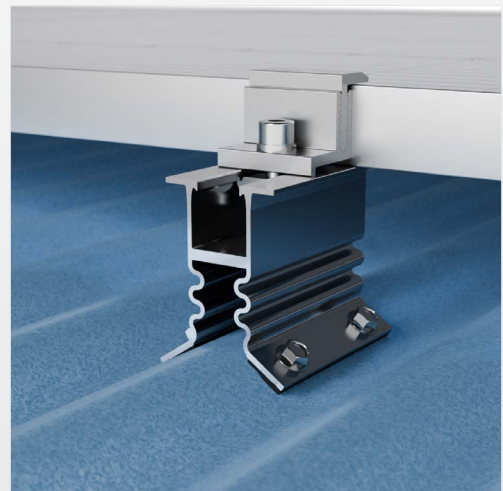
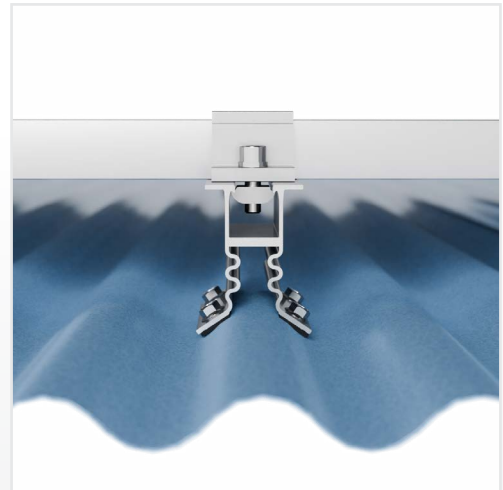
## Specifications

**Material:** AL 6005-T5, EPDM



## Dimensions

L 80 mm x W 53 mm x H 70 mm



Click or scan for full TDS

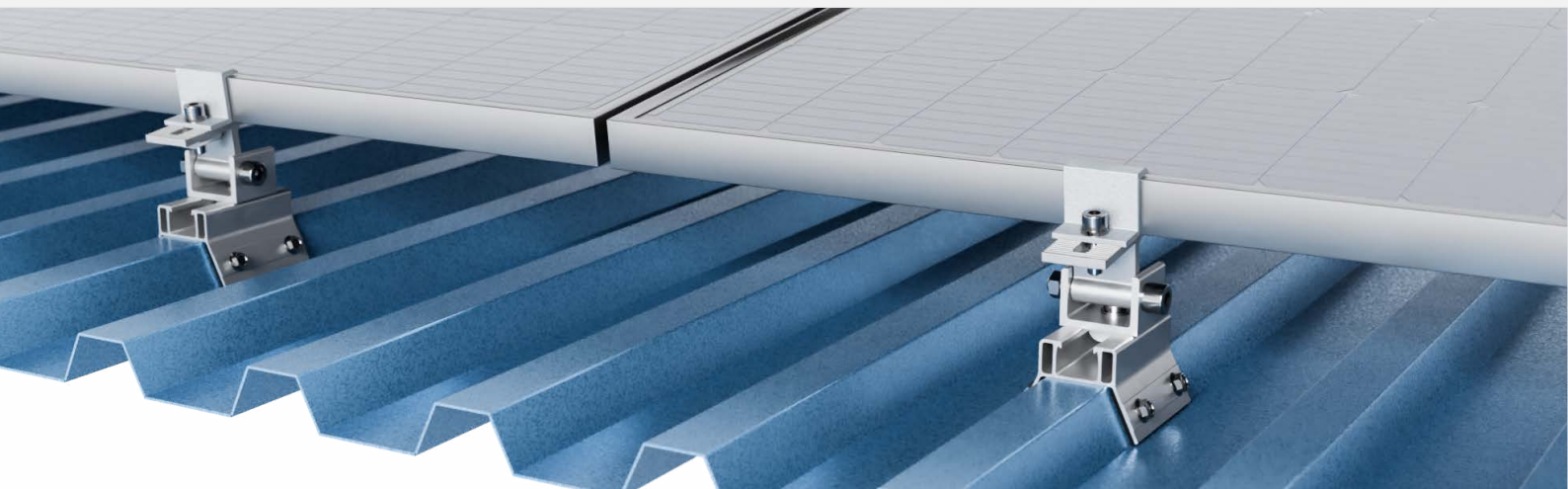


**LOW SHORT RAIL FOR IBR WITH 35 WIDE CREST AND 4 x M6 SIDE MOUNTING HOLES**

## Rooftops Solutions - Pierced Fix **LM-TBR-VL**

Introducing the LM-TBR-VL, a pierced fix solution designed specifically for IBR 686 profiles. Crafted from durable Aluminium 6005 T5, this sturdy system offers a low-profile fit that is ideal for tilted structures. The LM-TBR-VL includes a leak-preventing EPDM layer at the screw points, ensuring reliable protection against water ingress.

Its innovative design features diagonal screw insertion, providing a high pull-off value for superior strength and stability. Cost-effective and versatile, the LM-TBR-VL is an excellent choice for mounting cable trays and other applications, making it a practical and reliable solution for various installation needs.



# CHARACTERISTICS



## Application

IBR 686



## Features

- Equipped with a leak-preventing EPDM layer at screw points
- Sturdy and low-profile design, perfect for tilted structures
- Cost-effective compared to other clamps
- High pull-off strength due to diagonal screw insertion
- Suitable for mounting cable trays



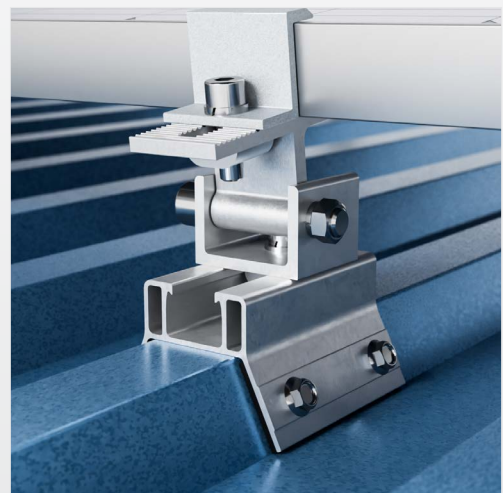
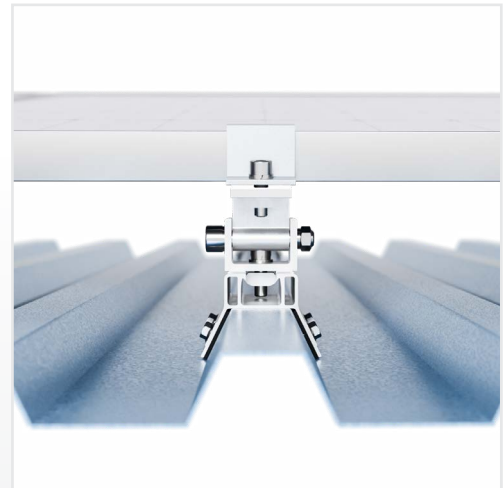
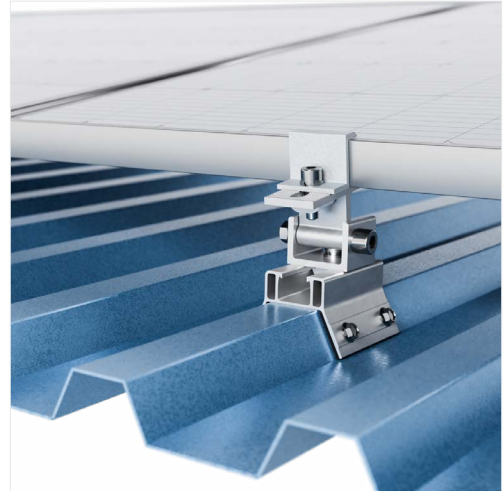
## Specifications

- **Material:** AL 6005-T5, EPDM
- Anodised > 13 µm



## Dimensions

L 80 mm x W 69 mm x H 48 mm



Click or scan for full TDS



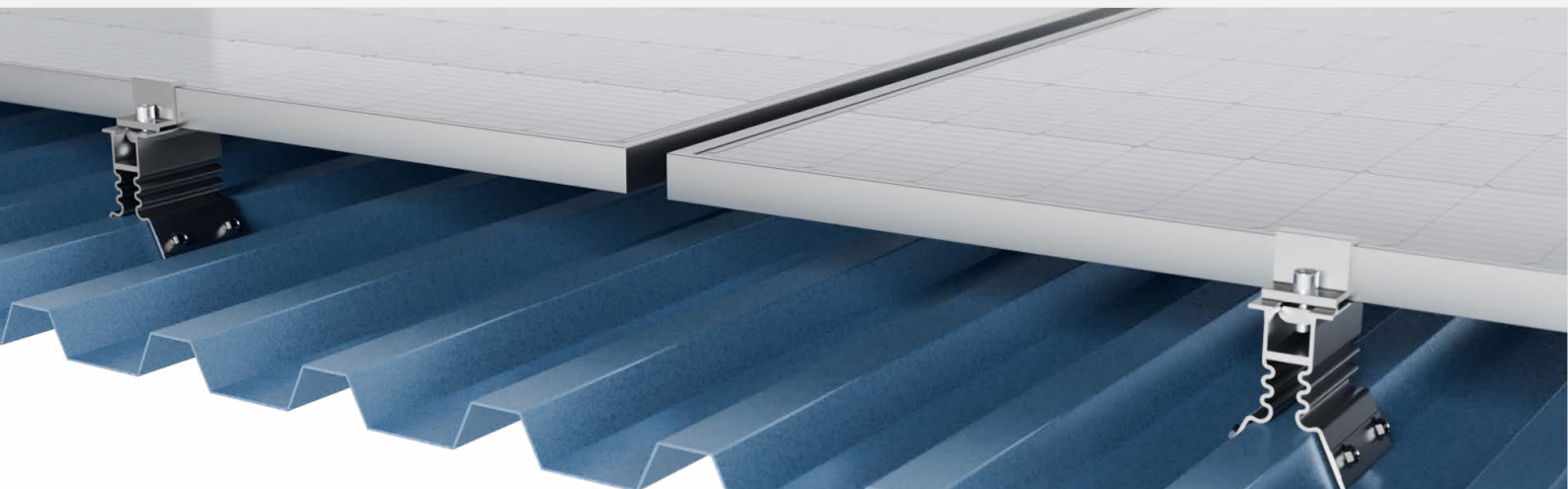
**SHORT RAIL WITH EPDM FOR THIN CREST IBR SHEETING  
WITH 3 x M6 HOLES - LANDSCAPE**

## Rooftops Solutions - Pierced Fix **LM-TBR-V**

Introducing the LM-TBR-V, a versatile short rail solution for IBR 686 and similar trapezoidal sheets. Featuring flexible legs to accommodate profile variations, it ensures a secure fit and exceptional holding strength. Made from durable Aluminium 6005-T5, EPDM, and vulcanized

elastomer, the LM-TBR-V includes a double gasket for waterproofing.

This rail is designed for landscape orientation and has four M6 side mounting holes. It offers excellent ventilation clearance and easy installation, making it ideal for solar panel support.



# CHARACTERISTICS



## Application

- IBR 686 and similar trapezoidal sheets
- Not applicable to all trapezoidal profiles



## Features

- Variable 'legs' allow for minor adjustments on trapezoidal sheets
- Fast and easy install
- Sheet penetration through vertical walls of sheet
- Shear force on screws results in very high holding strength
- Very good ventilation clearance
- Durable, non-corrosive materials
- Double gasket for waterproofing



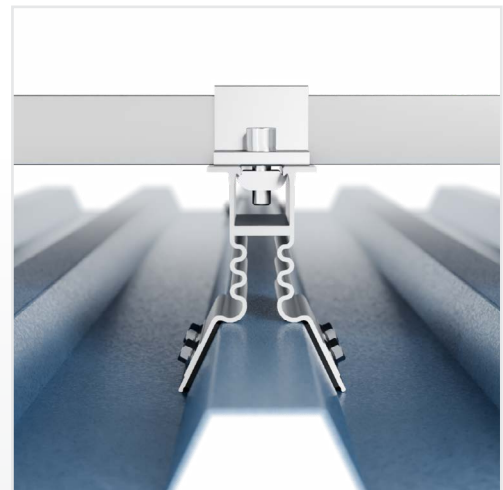
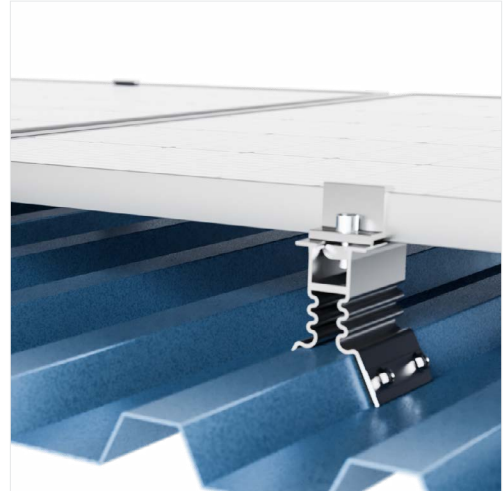
## Specifications

- **Material:** AL 6005-T5, EPDM, Vulcanised elastomer
- Anodised > 13 µm



## Dimensions

H 93 mm x L 80 mm x W 45 mm (65 mm above crest)



Click or scan for full TDS



| Product Code: | Dimensions:      | Material:  | Finish:  |
|---------------|------------------|------------|----------|
| LM-TBR-P      | 71 x 250 x 75 mm | AL 6005-T5 | Anodised |



SHORT RAIL WITH EPDM FOR IBR AND  
CORRUGATED SHEET WITH 8 x M6 HOLES

## Rooftops Solutions - Pierced Fix **LMK-TBR-P**

Introducing the LM-TBR-P, a versatile short rail for trapezoidal and corrugated roof sheets. This rail features pre-punched holes that align with common South African profiles, ensuring easy installation. Made from durable Aluminium 6005-T5, it includes a double gasket with an EPDM layer

and elastomer washer for effective waterproofing. The LM-TBR-P provides excellent ventilation clearance and incorporates advanced screw technology. With eight M6 holes for grounding washers and clamps, the LM-TBR-P is ideal for secure solar panel installations.



# CHARACTERISTICS



## Application

- Popular trapezoidal (IBR)
- Corrugated sheet



## Features

- Fast and easy install
- Pre-punched holes matching all popular South African trapezoidal and corrugated sheeting
- Very good ventilation clearance
- Durable, non-corrosive materials
- Double gasket for waterproofing, EPDM layer and elastomer washer
- Compatible grounding washer, mid- and end clamps



## Specifications

- **LMK-TBR-P Material:** AL 6063-T6, EPDM, Vulcanised elastomer
- **LM-TBR-P Material:** AL 6005-T5, EPDM, Vulcanised elastomer
- Anodised > 13 µm

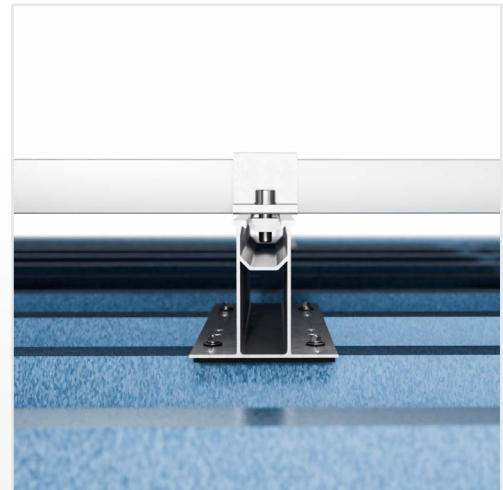
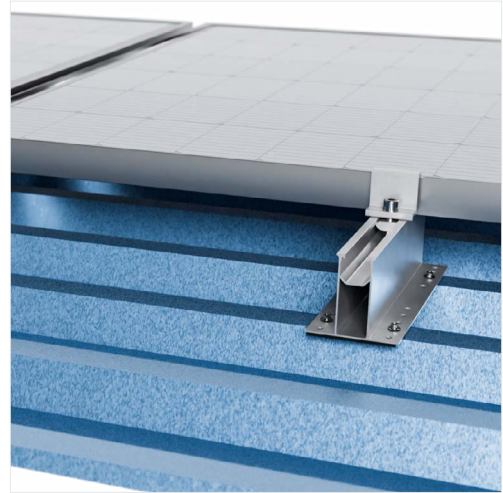


## Dimensions

- **LMK-TBR-P:** H 71 mm x L 250 mm x W 75 mm
- **LM-TBR-P:** H 71 mm x L 250 mm x W 75 mm



Click or scan for full TDS



Lumax Energy offers a diverse range of substructure fix solutions for various roofing applications, including Tile, Slate, Harvey Tile, Shingle, and Steel substructures. Locally manufactured for quality and reliability, our products feature innovative designs such as horizontal adjustability and corrosion-resistant materials like stainless steel and hot dip galvanised mild steel. With pre-punched designs for easy installation, our substructure fix offerings provide exceptional performance and durability. Explore our selection to find the ideal solution for your roofing projects.

# SUBSTRUCTURE FIX

### **Unleashing Versatility**

Our systems are tailored for both steel and wooden substructures, seamlessly integrating with Slate and Harvey tile roofs. It delivers secure attachments without compromising roof integrity, creating a dependable platform for long-lasting solar solutions.

### **A Legacy of Quality and Innovation**

We prioritize craftsmanship and performance in our substructure fix range. Made from high-grade materials, our products withstand tough conditions. Our commitment to innovation empowers contractors with cutting-edge solutions for efficient roofing installations.



**STAINLESS STEEL TILE ROOF HOOK INCLUDING AND EXCLUDING WOODSCREWS**

| Product Code: | Dimensions:        |
|---------------|--------------------|
| LMK-RH-S      | 177 x 171 x 104 mm |

## Substructure Fix - Roof Hooks **LMK-RH-S-S / LMK-RH-S**

The LMK-RH-S-S Roof Hook is a locally manufactured solution designed specifically for tile roofs, seamlessly combining durability and functionality. Its horizontally adjustable back plate ensures precise installation, while the included rail fasteners and C4 coated screws enhance convenience during installation.

Crafted from premium stainless steel, this roof hook boasts high corrosion resistance, making it a reliable choice for any roofing project. Not only does it meet rigorous standards, but it also provides peace of mind, making it the perfect addition to any roofing project. Also available without woodscrews (LMK-RH-S).



# CHARACTERISTICS



## Application

Most common tile roofs



## Features

- Locally manufactured for quality craftsmanship and local support
- Horizontally adjustable with a slot on the back plate for precise installation
- Includes rail fasteners and wood screws for convenience
- Supplied with C4 coated screws for added corrosion resistance
- Made from stainless steel for exceptional durability and corrosion resistance



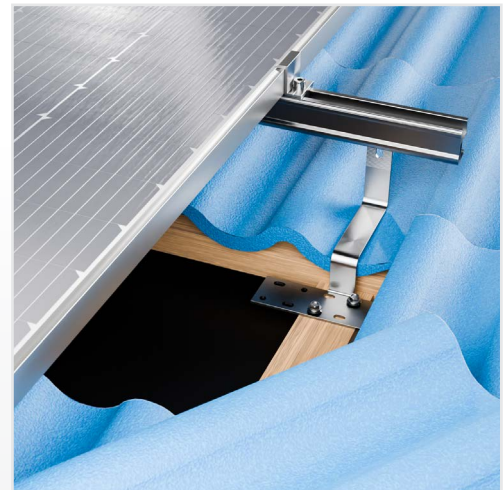
## Specifications

- **Material:** SUS304
- **LMK-RH-S-S:** Includes woodscrews
- **LMK-RH-S:** Excludes woodscrews



## Dimensions

H 177 mm x L 171 mm x W 104 mm



Click or scan for full TDS



**GALVANISED TILE ROOF HOOK EXCLUDING AND INCLUDING WOOD SCREWS**

| Product Code: | Dimensions:        |
|---------------|--------------------|
| LMK-RH-HDG    | 177 x 171 x 104 mm |

## Substructure Fix - Roof Hooks **LMK-RH-HDG / LMK-RH-S-HDG**

This substructure fix, known as the LMK-RH-HDG, is meticulously crafted for tile roofs and proudly produced locally. Designed for tile roofs, offering exceptional durability and versatility. Its hot-dip galvanized finish provides enhanced corrosion resistance, ensuring longevity in various environments.

The horizontally adjustable back plate allows for easy alignment, making installation a breeze, while the design comfortably accommodates most standard tiles. Additionally, this product can be powder-coated in a range of colors, combining aesthetic appeal with functional protection.



# CHARACTERISTICS



## Application

Most common tile roofs



## Features

- Hot-dip galvanized for enhanced corrosion protection
- Proudly manufactured locally to support regional craftsmanship
- Features a horizontally adjustable slot on the back plate for precise installation
- Designed to fit comfortably over most standard tile profiles
- Available for powder coating in various colors, adding aesthetic appeal and extra corrosion resistance



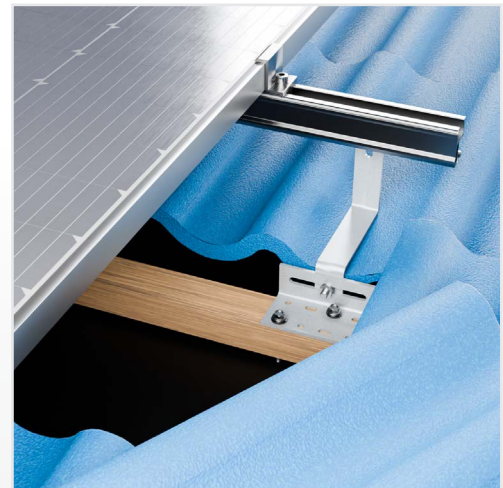
## Specifications

- **Material:** Mild steel, SUS304
- **LMK-RH-S-HDG:** Includes woodscrews
- **LMK-RH-HDG:** Excludes woodscrews



## Dimensions

H 177 mm x L 171 mm x W 104 mm



Click or scan for full TDS



**STAINLESS STEEL TILE ROOF HOOK EXCLUDING WOOD SCREWS**

## Substructure Fix - Roof Hooks **LM-RH-S-S**

The LM-RH-S-S is designed for tile roofs, featuring a wide back plate for easy installation and a fixed, robust structure for added durability. It features an aesthetically pleasing finish, while it includes

rail fasteners and wood screws for convenience. Crafted from high-quality stainless steel, this roof hook ensures long-lasting performance.



# CHARACTERISTICS



## Application

Most common tile roofs



## Features

- Wide back plate for hassle-free and efficient installation
- Fixed, non-adjustable design ensures enhanced strength and stability
- Comes complete with rail fasteners and wood screws for a secure and seamless setup



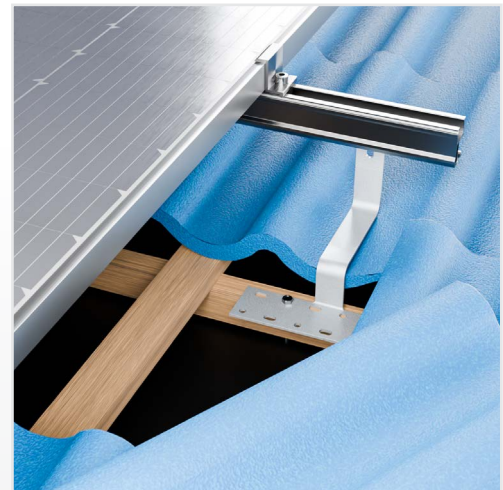
## Specifications

**Material:** SUS304



## Dimensions

H 170 mm x L 181 mm x W 179 mm



Click or scan for full TDS



FS-HBS-ST-M8X85

## Substructure Fix - Hanger Bolts

The FS-HBS-ST-M8X85 hanger bolt ensures secure attachment to steel substructures with a self-tapping tip for easy installation. Made from corrosion-resistant stainless steel, it withstands tough environments.

A rubber grommet prevents leaks, boosting durability. Its dual-section design (M10 top, M8 bottom) and included fasteners offer a robust, leak-resistant mounting solution for L brackets.



Hanger bolts are essential for securing to steel substructures, providing easy installation and durability. All hanger bolts come with rubber grommets to prevent leaks, except for the HBW-M10x200, which has a sharp, pointed tip. Made from corrosion-resistant stainless steel, they ensure long-lasting performance. The HBS-M8x136 model features a fluted tip for easy insertion into pre-drilled steel, while other models have self-drilling tips. These bolts include fasteners for L-bracket attachment and hex head Allen key socket holes for convenient use with standard tools.

| Product Code:    | Material: | Dimensions:                               | Finish:  |
|------------------|-----------|---|----------|
| FS-HBS-ST-M8X85  | SUS304    | Top - M10 x 50 mm<br>Bottom - M8 x 85 mm  | Polished |
| FS-HBS-M8x136    | SUS304    | Top - M8 x 74 mm<br>Bottom - M10 x 65 mm  | Polished |
| FS-HBS-ST-M8X155 | SUS304    | Top - M10 x 50 mm<br>Bottom - M8 x 155 mm | Polished |
| FS-HBW-M8X115    | SUS304    | Top - M8 x 115 mm<br>Bottom - M8 x 115 mm | Polished |
| FS-HBW-M10X200   | SUS304    | Top - M8 x 74 mm<br>Bottom - M10 x 65 mm  | Polished |



LM-L-C-P



## Substructure Fix - L-Brackets

The LM-L-C-P L-Bracket is designed to fit most common corrugated profiles and is crafted from durable AL 6005 - T5. Its textured surface ensures a secure hold on the rail, while an innovative design allows it to be mounted without creating

new roof holes. The bracket includes an EPDM layer to prevent leaks, offering a reliable, watertight solution that maintains roof integrity by replacing existing roof screws.



Discover our versatile L-brackets, perfect for railed PV mounting systems. They provide sturdy support and are compatible with hanger bolts or screws for secure substructure attachment.

**Product Code:**

**Material:**

**Dimensions:**

**Finish:**

|          |           |                  |          |
|----------|-----------|------------------|----------|
| LM-L-C-L | AL6005-T5 | 40 x 33 x 86 mm  | Anodised |
| LM-L-C-P | AL6005-T5 | 40 x 33 x 86 mm  | Anodised |
| LM-L-M10 | AL6005-T5 | 40 x 33 x 84 mm  | Anodised |
| LM-L-M8  | AL6005-T5 | 40 x 33 x 84 mm  | Anodised |
| LM-LFK   | AL6005-T5 | 33 x 205 x 85 mm | Anodised |



ANGLED PORTRAIT BALLAST SYSTEM

## Ballast Systems

Lumax Energy’s ballasted PV panel mounting systems offer versatile, non-invasive solutions for solar installations on flat rooftops, making them ideal for commercial and industrial applications. These systems use weights instead of roof penetrations, preserving roof integrity while

providing stability and durability, even in challenging conditions. Whether mounted in portrait, landscape, or east-west configurations, our ballasted systems ensure efficient use of space and energy optimization.

### BALLAST SYSTEMS - PORTRAIT



The ballasted PV panel mounting system is used for flat rooftops, typically concrete, where panels are mounted at an angle using weights instead of roof penetrations. This system is ideal for non-invasive installations on commercial buildings. Additionally the system offers an adjustable 10-22 degree tilt, works with R42 and R46 slotted rails, and can include EPDM to protect the roof’s waterproof coating.

| Product Code: | Material: | Dimensions:     | Finish:  | Additional Notes:  |
|---------------|-----------|-----------------|----------|--|
| AFP-R         | AL6005-T5 | 40 x 33 x 86 mm | Anodised | <ul style="list-style-type: none"> <li>Adjustable</li> <li>Compatible with R42 / R46 Rail</li> </ul> |
| TFP-R         | AL6005-T5 | 40 x 33 x 84 mm | Anodised | <ul style="list-style-type: none"> <li>Fixed</li> <li>Compatible with R42 Rail</li> </ul>            |

## (Ballast Systems - Portrait Continued)

| <b>Product Code:</b> | <b>Material:</b>   | <b>Dimensions:</b>                     | <b>Finish:</b>  |
|----------------------|--------------------|--|-----------------|
| AFP-F                | AL6005-T5 + SUS304 | 38 x 38 x 52 mm                        | Anodised        |
| LM-EPDM 80x40        | EPDM               | 80 x 40 x 2 mm                         |                 |
| LM-R20-240           | AL6063-T6          | 240 x 40 x 20 mm                       | Mill            |
| LM-R20-2600          | AL6063-T6          | 2600 x 40 x 20 mm                      | Mill            |
| LM-R20-3900          | AL6063-T6          | 3900 x 40 x 20 mm                      | Mill            |
| LM-R20-4300          | AL6063-T6          | 4300 x 40 x 20 mm                      | Mill            |
| LM-R20-5200          | AL6063-T6          | 5200 x 40 x 20 mm                      | Mill            |
| LM-R20-575           | AL6063-T6          | 575 x 40 x 20 mm                       | Mill            |
| LM-R20-5750          | AL6063-T6          | 5750 x 40 x 20 mm                      | Mill            |
| LM-R20-660           | AL6063-T6          | 0660 x 40 x 20 mm                      | Mill            |
| LM-EC30-RNW          | AL6063-T6          | 40 x 32 x 34 mm<br>(30 mm Frames)      | Anodised + mill |
| LM-EC30-RNW-01       | AL6063-T6          | 50 x 32 x 34 mm                        | Anodised        |
| LMK-EC30-RNW         | AL6063-T6 + SS     | 40 x 32 x 39 mm<br>(30 mm Frames)      | Mill            |
| LMK-EC30-RNW-01      | AL6063-T6 + SS     | 50 x 32 x 39 mm<br>(30 mm Frames)      | Anodised        |
| LM-EC30-RNW          | AL6063-T6          | 40 x 32 x 34 mm<br>(30 mm Frames)      | Anodised + mill |
| LM-EC30-RNW-01       | AL6063-T6          | 50 x 32 x 34 mm                        | Anodised        |
| LMK-EC30-RNW         | AL6063-T6 + SS     | 40 x 32 x 39 mm<br>(30 mm Frames)      | Mill            |
| LMK-EC30-RNW-01      | AL6063-T6 + SS     | 50 x 32 x 39 mm<br>(30 mm Frames)      | Mill            |
| LM-EC35-RNW          | AL6005-T5 + SS     | 40 x 32 x 39 mm<br>(35 mm Frames)      | Anodised + mill |
| LMK-EC35-RNW         | AL6063-T6 + SS     | 40 x 32 x 39 mm<br>(30 mm Frames)      | Mill            |
| LM-EC40-RNW          | AL6005-T5          | 40 x 32 x 44 mm<br>(40 mm Frames)      | Anodised + mill |
| LM-AEC30-45-RNW      | AL6005-T5          | 40 x 32 mm<br>(30 - 45 mm Frames)      | Anodised        |
| LM-AEC35-50-RNW      | AL6005-T5          | 40 x 32 mm<br>(35 - 50 mm Frames)      | Anodised        |
| LM-IC30-RNW          | AL6005-T5 + SS     | 40 x 42 x 15 mm<br>(26 - 35 mm Frames) | Anodised + mill |
| LMK-IC30-RNW         | AL6005-T5 + SS     | 40 x 42 x 40 mm<br>(26 - 36 mm Frames) | Tumbled         |
| LMK-IC30-RNW-01      | AL6005-T5 + SS     | 50 x 42 x 40 mm<br>(26 - 36 mm Frames) | Tumbled         |
| LM-IC35-RNW          | AL6005-T5 + SS     | 45 x 42 x 52 mm<br>(31 - 41 mm Frames) | Anodised + mill |
| LMK-IC35-RNW         | AL6005-T5 + SS     | 45 x 42 x 52 mm<br>(31 - 41 mm Frames) | Tumbled         |
| LMK-IC35-RNW-01      | AL6005-T5 + SS     | 50 x 42 x 52 mm<br>(31 - 41 mm Frames) | Tumbled         |
| LM-IC40-RNW          | AL6005-T5 + SS     | 40 x 42 x 15 mm<br>(36 - 46 mm Frames) | Anodised + mill |

## BALLAST SYSTEMS - LANDSCAPE



Lumax's landscape ballasted PV panel mounting system is designed for flat rooftops, where solar panels are installed horizontally using weights instead of penetrations to secure the structure. This system allows for efficient use of space and is ideal for protecting roof integrity while providing non-invasive installations, particularly on large commercial or industrial buildings. The ballast system ensures stability, even in high wind conditions. It also has a pivot grab attachment that holds panels securely from the top and bottom, offers windshields to reduce ballast weight, and provides tilt options of 10, 15, 20, and 25 degrees, with custom sizes available.

| Product Code:     | Material:             | Dimensions:                       | Finish:         |
|-------------------|-----------------------|-----------------------------------|-----------------|
| LM-PG-FRONT       | AL6005-T5             | 79 x 43 x 60 mm                   | Anodised        |
| LMK-PG-FRONT      | AL6005-T5             | 90 x 40 x 65 mm                   | Anodised        |
| LMK-PG-REAR-10    | AL6005-T5 + AL6063-T6 | 249 x 38 x 66 mm                  | Anodised + mill |
| LMK-PG-REAR-15    | AL6005-T5+ AL6063-T6  | 354 x 38 x 66 mm                  | Anodised + mill |
| LMK-PG-REAR-20    | AL6005-T5 + AL6063-T6 | 459 x 38 x 66 mm                  | Anodised + mill |
| LMK-PG-REAR-25    | AL6005-T5 + AL6063-T6 | 574 x 38 x 66 mm                  | Anodised + mill |
| LM-R20-240        | AL6063-T6             | 240 x 40 x 20 mm                  | Mill            |
| LM-R20-2600       | AL6063-T6             | 2600 x 40 x 20 mm                 | Mill            |
| LM-R20-3900       | AL6063-T6             | 3900 x 40 x 20 mm                 | Mill            |
| LM-R20-4300       | AL6063-T6             | 4300 x 40 x 20 mm                 | Mill            |
| LM-R20-5200       | AL6063-T6             | 5200 x 40 x 20 mm                 | Mill            |
| LM-R20-575        | AL6063-T6             | 575 x 40 x 20 mm                  | Mill            |
| LM-R20-5750       | AL6063-T6             | 5750 x 40 x 20 mm                 | Mill            |
| LM-R20-660        | AL6063-T6             | 660 x 40 x 20 mm                  | Mill            |
| LM-EPDM 80x40     | EPDM                  | 80 x 40 x 2 mm                    | N/A             |
| LMK-Z-RWS-10      | DX51D Steel           | 215 x 2200 x 0.5 mm               | Painted         |
| LMK-Z-RWS-15      | DX51D Steel           | 320 x 2200 x 0.5 mm               | Painted         |
| LMK-Z-RWS-20      | DX51D Steel           | 425 x 2200 x 0.5 mm               | Painted         |
| LMK-Z-RWS-25      | DX51D Steel           | 540 x 2200 x 0.5 mm               | Painted         |
| FS-S-SP-25X5.5-C3 | C1022 Steel           | 5.5 x 25 mm                       | Zinc plated     |
| FS-S-SP-25X5.5-C4 | C1022 Steel           | 5.5 x 25 mm                       | Zinc plated     |
| LM-EC30-RNW       | AL6063-T6             | 40 x 32 x 34 mm<br>(30 mm Frames) | Anodised + mill |
| LM-EC30-RNW-01    | AL6063-T6             | 50 x 32 x 34 mm                   | Anodised        |
| LMK-EC30-RNW      | AL6063-T6 + SS        | 40 x 32 x 39 mm<br>(30 mm Frames) | Mill            |
| LMK-EC30-RNW-01   | AL6063-T6 + SS        | 50 x 32 x 39 mm<br>(30 mm Frames) | Anodised        |
| LM-EC30-RNW       | AL6063-T6             | 40 x 32 x 34 mm<br>(30 mm Frames) | Anodised + mill |
| LM-EC30-RNW-01    | AL6063-T6             | 50 x 32 x 34 mm                   | Anodised        |
| LMK-EC30-RNW      | AL6063-T6 + SS        | 40 x 32 x 39 mm<br>(30 mm Frames) | Mill            |
| LMK-EC30-RNW-01   | AL6063-T6 + SS        | 50 x 32 x 39 mm<br>(30 mm Frames) | Mill            |
| LM-EC35-RNW       | AL6005-T5 + SS        | 40 x 32 x 39 mm<br>(35 mm Frames) | Anodised + mill |
| LMK-EC35-RNW      | AL6063-T6 + SS        | 40 x 32 x 39 mm<br>(30 mm Frames) | Mill            |

(Ballast Systems - Landscape Continued)

| <b>Product Code:</b> | <b>Material:</b> | <b>Dimensions:</b>                     | <b>Finish:</b>  |
|----------------------|------------------|--|-----------------|
| LM-EC40-RNW          | AL6005-T5        | 40 x 32 x 44 mm<br>(40 mm Frames)      | Anodised + mill |
| LM-AEC30-45-RNW      | AL6005-T5        | 40 x 32 mm<br>(30 - 45 mm Frames)      | Anodised        |
| LM-AEC35-50-RNW      | AL6005-T5        | 40 x 32 mm<br>(35 - 50 mm Frames)      | Anodised        |
| LM-IC30-RNW          | AL6005-T5 + SS   | 40 x 42 x 15 mm<br>(26 - 35 mm Frames) | Anodised + mill |
| LMK-IC30-RNW         | AL6005-T5 + SS   | 40 x 42 x 40 mm<br>(26 - 36 mm Frames) | Tumbled         |
| LMK-IC30-RNW-01      | AL6005-T5 + SS   | 50 x 42 x 40 mm<br>(26 - 36 mm Frames) | Tumbled         |
| LM-IC35-RNW          | AL6005-T5 + SS   | 45 x 42 x 52 mm<br>(31 - 41 mm Frames) | Anodised + mill |
| LMK-IC35-RNW         | AL6005-T5 + SS   | 45 x 42 x 52 mm<br>(31 - 41 mm Frames) | Tumbled         |
| LMK-IC35-RNW-01      | AL6005-T5 + SS   | 50 x 42 x 52 mm<br>(31 - 41 mm Frames) | Tumbled         |
| LM-IC40-RNW          | AL6005-T5 + SS   | 40 x 42 x 15 mm<br>(36 - 46 mm Frames) | Anodised + mill |



LANDSCAPE BALLAST SYSTEM

## BALLAST SYSTEMS - EAST-WEST



The east-west ballasted PV panel mounting system is designed for flat rooftops, where solar panels are installed facing both East and West to help balance energy production throughout the day. It maximizes roof space for higher panel density and features an east-west configuration that reduces wind uplift by allowing panels to shield each other's rear surfaces for improved stability. Its ballasted design simplifies installation and maintenance, providing quick setup and easy access for cleaning or repairs without compromising roof integrity.

| Product Code:   | Material:             | Dimensions:                       | Finish:         |
|-----------------|-----------------------|-----------------------------------|-----------------|
| LM-PG-FRONT     | AL6005-T5             | 79 x 43 x 60 mm                   | Anodised        |
| LMK-PG-EW       | AL6005-T5 + AL6063-T6 | 157 x 42 x 123 mm                 | Anodised + mill |
| LM-R20-240      | AL6063-T6             | 240 x 40 x 20 mm                  | Anodised        |
| LM-R20-2600     | AL6063-T6             | 2600 x 40 x 20 mm                 | Anodised        |
| LM-R20-3900     | AL6063-T6             | 3900 x 40 x 20 mm                 | Anodised        |
| LM-R20-4300     | AL6063-T6             | 4300 x 40 x 20 mm                 | Anodised        |
| LM-R20-5200     | AL6063-T6             | 5200 x 40 x 20 mm                 | Anodised        |
| LM-R20-575      | AL6063-T6             | 575 x 40 x 20 mm                  | Anodised        |
| LM-R20-5750     | AL6063-T6             | 5750 x 40 x 20 mm                 | Anodised        |
| LM-R20-660      | AL6063-T6             | 660 x 40 x 20 mm                  | Anodised        |
| LM-EPDM 80x40   | EPDM                  | 80 x 40 x 2 mm                    | N/A             |
| LM-PRC          | AL6005-T5 + SUS304    | 55 x 28 x 10 mm                   | Anodised        |
| LMK-PRC         | AL6005-T5 + SUS304    | 55 x 28 x 10 mm                   | Mill            |
| LM-EC30-RNW     | AL6063-T6             | 40 x 32 x 34 mm<br>(30 mm Frames) | Anodised + mill |
| LM-EC30-RNW-01  | AL6063-T6             | 50 x 32 x 34 mm                   | Anodised        |
| LMK-EC30-RNW    | AL6063-T6 + SS        | 40 x 32 x 39 mm<br>(30 mm Frames) | Mill            |
| LMK-EC30-RNW-01 | AL6063-T6 + SS        | 50 x 32 x 39 mm<br>(30 mm Frames) | Anodised        |
| LM-EC30-RNW     | AL6063-T6             | 40 x 32 x 34 mm<br>(30 mm Frames) | Anodised + mill |
| LM-EC30-RNW-01  | AL6063-T6             | 50 x 32 x 34 mm                   | Anodised        |
| LMK-EC30-RNW    | AL6063-T6 + SS        | 40 x 32 x 39 mm<br>(30 mm Frames) | Mill            |
| LMK-EC30-RNW-01 | AL6063-T6 + SS        | 50 x 32 x 39 mm<br>(30 mm Frames) | Mill            |
| LM-EC35-RNW     | AL6005-T5 + SS        | 40 x 32 x 39 mm<br>(35 mm Frames) | Anodised + mill |
| LMK-EC35-RNW    | AL6063-T6 + SS        | 40 x 32 x 39 mm<br>(30 mm Frames) | Mill            |
| LM-EC40-RNW     | AL6005-T5             | 40 x 32 x 44 mm<br>(40 mm Frames) | Anodised + mill |
| LM-AEC30-45-RNW | AL6005-T5             | 40 x 32 mm<br>(30 - 45 mm Frames) | Anodised        |
| LM-AEC35-50-RNW | AL6005-T5             | 40 x 32 mm<br>(35 - 50 mm Frames) | Anodised        |

(Ballast Systems - East-West Continued)

| <b>Product Code:</b> | <b>Material:</b> | <b>Dimensions:</b>                     | <b>Finish:</b>  |
|----------------------|------------------|--|-----------------|
| LM-IC30-RNW          | AL6005-T5 + SS   | 40 x 42 x 15 mm<br>(26 - 35 mm Frames) | Anodised + mill |
| LMK-IC30-RNW         | AL6005-T5 + SS   | 40 x 42 x 40 mm<br>(26 - 36 mm Frames) | Tumbled         |
| LMK-IC30-RNW-01      | AL6005-T5 + SS   | 50 x 42 x 40 mm<br>(26 - 36 mm Frames) | Tumbled         |
| LM-IC35-RNW          | AL6005-T5 + SS   | 45 x 42 x 52 mm<br>(31 - 41 mm Frames) | Anodised + mill |
| LMK-IC35-RNW         | AL6005-T5 + SS   | 45 x 42 x 52 mm<br>(31 - 41 mm Frames) | Tumbled         |
| LMK-IC35-RNW-01      | AL6005-T5 + SS   | 50 x 42 x 52 mm<br>(31 - 41 mm Frames) | Tumbled         |
| LM-IC40-RNW          | AL6005-T5 + SS   | 40 x 42 x 15 mm<br>(36 - 46 mm Frames) | Anodised + mill |



EAST-WEST BALLAST SYSTEM

# Rooftop Mounting Kits



LMK-KIT-CORRUGATED-5PL

## LMK-KIT-CORRUGATED-5PL

| Product Included: | Qty: | Material:      | Dimensions:     | Finish:         |
|-------------------|------|----------------|-----------------|-----------------|
| LM-CRL            | 12   | AL6005-T5      | 80 x 53 x 70 mm | Anodised        |
| FS-S-SP-25X5.5-C4 | 48   | C1022 Steel    | 5.5 x 25 mm     | Zinc plated     |
| LM-EC35-BARE      | 4    | AL6005-T5 + SS | 40 x 32 x 39 mm | Mill            |
| LM-EC30-RNW       | 4    | AL6005-T5 + SS | 40 x 32 x 34 mm | Anodised + mill |
| LM-IC35-GP1-RNW   | 8    | AL6005-T5 + SS | 45 x 42 x 52 mm | Anodised + mill |

## LMK-KIT-IBR-5PL

| Product Included: | Qty: | Material:      | Dimensions:        | Finish:         |
|-------------------|------|----------------|--------------------|-----------------|
| LMK-RH-S-S        | 8    | SUS304         | 177 x 171 x 104 mm | Galvanised      |
| LM-RS-R-R42       | 2    | AL6005-T5      | 80 x 53 x 70 mm    | Anodised        |
| LM-R46-6200       | 2    | AL6063-T6      | 5.5 x 25 mm        | Zinc plated     |
| LM-EC30-RNW       | 4    | AL6005-T5 + SS | 40 x 32 x 34 mm    | Anodised + mill |
| LM-EC35-BARE      | 4    | AL6005-T5 + SS | 40 x 32 x 39 mm    | Mill            |
| LM-IC35-GP1-RNW   | 6    | AL6005-T5 + SS | 45 x 42 x 52 mm    | Anodised + mill |

## LMK-KIT-IBR-5PL

| Product Included: | Qty: | Material:      | Dimensions:      | Finish:         |
|-------------------|------|----------------|------------------|-----------------|
| LM-SRL65-M6-E     | 12   | AL6005-T5      | 65 x 100 x 39 mm | Anodised        |
| FS-S-SP-25X5.5-C4 | 36   | C1022 Steel    | 5.5 x 25 mm      | Zinc plated     |
| LM-EC30-RNW       | 4    | AL6005-T5 + SS | 40 x 32 x 34 mm  | Anodised + mill |
| LM-EC35-BARE      | 4    | AL6005-T5 + SS | 40 x 32 x 39 mm  | Mill            |
| LM-IC35-GP1-RNW   | 8    | AL6005-T5 + SS | 45 x 42 x 52 mm  | Anodised + mill |

(Rooftop Mounting Kits Continued)

## LMK-KIT-TILE-HDG-4PL

| Product Included: | Qty: | Material:      | Dimensions:        | Finish:         |
|-------------------|------|----------------|--------------------|-----------------|
| LMK-RH-S-HDG      | 8    | SUS304         | 177 x 171 x 104 mm | HDG             |
| LM-RS-R-R42       | 2    | AL6005-T5      | 80 x 53 x 70 mm    | Anodised        |
| LM-R46-6200       | 2    | AL6063-T6      | 5.5 x 25 mm        | Zinc plated     |
| LM-EC35-BARE      | 4    | AL6005-T5 + SS | 40 x 32 x 39 mm    | Mill            |
| LM-EC30-RNW       | 4    | AL6005-T5 + SS | 40 x 32 x 34 mm    | Anodised + mill |
| LM-IC35-GP1-RNW   | 6    | AL6005-T5 + SS | 45 x 42 x 52 mm    | Anodised + mill |

## LMK-KIT-TILE-HDG-5PL

| Product Included: | Qty: | Material:      | Dimensions:        | Finish:         |
|-------------------|------|----------------|--------------------|-----------------|
| LMK-RH-S-HDG      | 10   | SUS304         | 177 x 171 x 104 mm | Galvanised      |
| LM-RS-R-R42       | 2    | AL6005-T5      | 80 x 53 x 70 mm    | Anodised        |
| LM-R46-4700       | 2    | AL6063-T6      | 4700 x 31 x 46 mm  | Mill            |
| LM-EC30-RNW       | 4    | AL6005-T5 + SS | 40 x 32 x 34 mm    | Anodised + mill |
| LM-EC35-BARE      | 4    | AL6005-T5 + SS | 40 x 32 x 39 mm    | Mill            |
| LM-IC35-GP1-RNW   | 8    | AL6005-T5 + SS | 45 x 42 x 52 mm    | Anodised + mill |

## LMK-KIT-TILE-SS-5PL

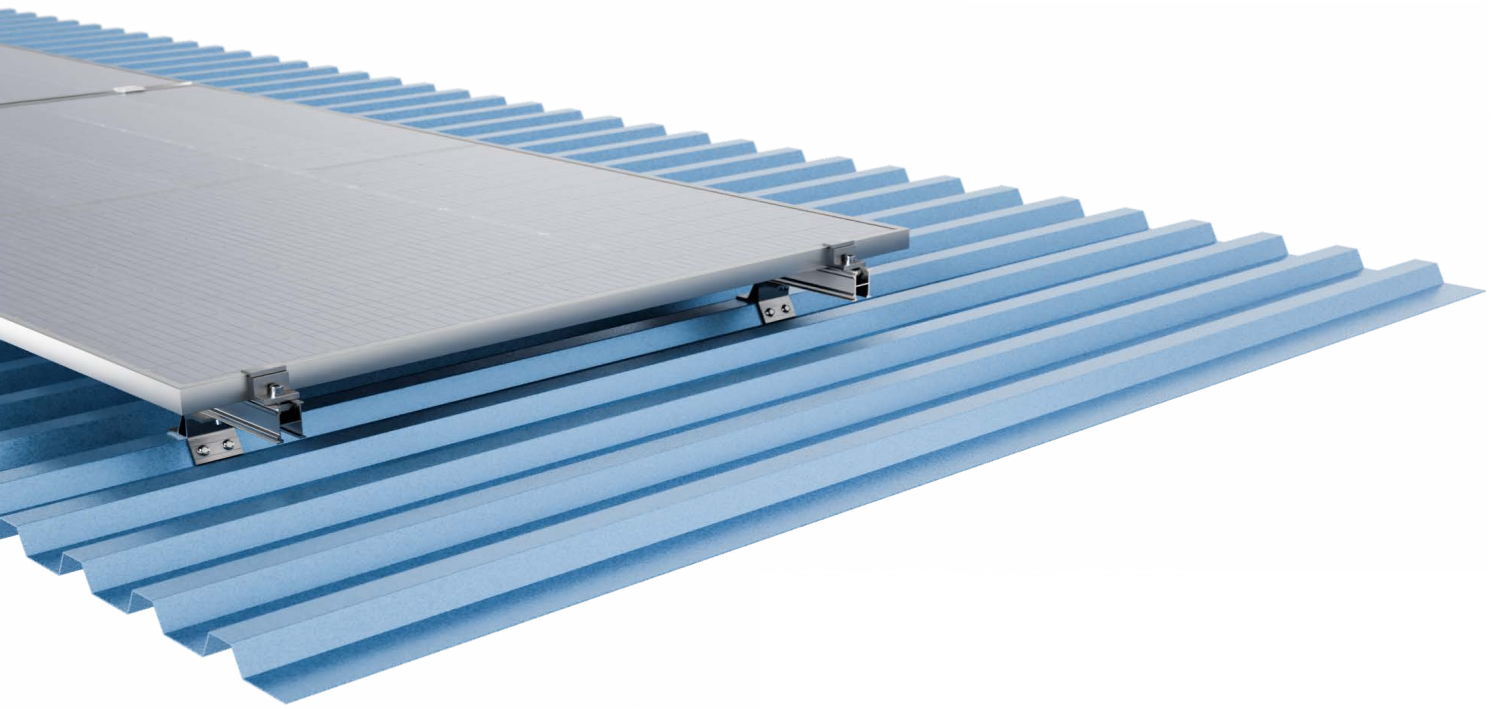
| Product Included: | Qty: | Material:      | Dimensions:        | Finish:         |
|-------------------|------|----------------|--------------------|-----------------|
| LMK-RH-S-S        | 10   | SUS304         | 177 x 171 x 104 mm | HDG             |
| LM-RS-R-R42       | 2    | AL6005-T5      | 80 x 53 x 70 mm    | Anodised        |
| LM-R46-6200       | 2    | AL6063-T6      | 5.5 x 25 mm        | Zinc plated     |
| LM-EC30-RNW       | 4    | AL6005-T5 + SS | 40 x 32 x 34 mm    | Anodised + mill |
| LM-EC35-BARE      | 4    | AL6005-T5 + SS | 40 x 32 x 39 mm    | Mill            |
| LM-IC35-GP1-RNW   | 8    | AL6005-T5 + SS | 45 x 42 x 52 mm    | Anodised + mill |

## LMK-KIT-L-KLIPOK-5PL

| Product Included: | Qty: | Material:      | Dimensions:        | Finish:         |
|-------------------|------|----------------|--------------------|-----------------|
| LMK-KS-700L       | 12   | SUS304         | 177 x 171 x 104 mm | HDG             |
| LM-EC35-BARE      | 4    | AL6005-T5 + SS | 40 x 32 x 39 mm    | Mill            |
| LM-EC30-RNW       | 4    | AL6005-T5 + SS | 40 x 32 x 34 mm    | Anodised + mill |
| LM-IC35-GP1-RNW   | 8    | AL6005-T5 + SS | 45 x 42 x 52 mm    | Anodised + mill |

## LMK-KIT-KLIPOK-5PL

| Product Included: | Qty: | Material:          | Dimensions:     | Finish:         |
|-------------------|------|--------------------|-----------------|-----------------|
| LM-KS-700         | 12   | AL6005-T5 + SUS304 | 87 x 80 x 45 mm | HDG             |
| LM-EC35-BARE      | 4    | AL6005-T5 + SS     | 40 x 32 x 39 mm | Mill            |
| LM-EC30-RNW       | 4    | AL6005-T5 + SS     | 40 x 32 x 34 mm | Anodised + mill |
| LM-IC35-GP1-RNW   | 8    | AL6005-T5 + SS     | 45 x 42 x 52 mm | Anodised + mill |



LM-R42

## Extrusions - Rails and Splices

Introducing our versatile rails designed for optimal photovoltaic (PV) system installation. Crafted from corrosion-resistant aluminum, these rails come in top, side, and bottom fix configurations, featuring slotted designs for flexible mounting options.

Available in various lengths, they ensure seamless integration with substructure fix brackets and seam clamps, simplifying the installation process while delivering durability and reliable performance for your solar projects.

### TOP / SIDE FIX RAILS



Top / side fix rails optimize PV system installation. Made from corrosion-resistant aluminum for durability, they feature slots at both the top and side, come in various lengths, and have a refined mill finish for seamless integration with substructure fix brackets.

| Product Code: | Material: | Dimensions:       | Finish: |
|---------------|-----------|-------------------|---------|
| LM-R46-1000   | AL6063-T6 | 1000 x 31 x 46 mm | Mill    |
| LM-R46-3150   | AL6063-T6 | 3150 x 31 x 46 mm | Mill    |
| LM-R46-3300   | AL6063-T6 | 3300 x 31 x 46 mm | Mill    |
| LM-R46-4150   | AL6063-T6 | 4150 x 31 x 46 mm | Mill    |
| LM-R46-4400   | AL6063-T6 | 4400 x 31 x 46 mm | Mill    |
| LM-R46-4700   | AL6063-T6 | 4700 x 31 x 46 mm | Mill    |

(Top / Side Fix Rails Continued)

| <b>Product Code:</b> | <b>Material:</b> | <b>Dimensions:</b> | <b>Finish:</b> |
|----------------------|------------------|--------------------|----------------|
| LM-R46-5150          | AL6063-T6        | 5150 x 31 x 46 mm  | Mill           |
| LM-R46-5450          | AL6063-T6        | 5450 x 31 x 46 mm  | Mill           |
| LM-R46-6200          | AL6063-T6        | 6200 x 31 x 46 mm  | Mill           |

## TOP FIX RAILS



Top fix rails feature a durable, slotted aluminum design. Available in various lengths, they cater to diverse PV system installation requirements.

| <b>Product Code:</b> | <b>Material:</b> | <b>Dimensions:</b> | <b>Finish:</b> |
|----------------------|------------------|--------------------|----------------|
| LM-R20-240           | AL6063-T6        | 240 x 40 x 20 mm   | Mill           |
| LM-R20-2600          | AL6063-T6        | 2600 x 40 x 20 mm  | Mill           |
| LM-R20-3900          | AL6063-T6        | 3900 x 40 x 20 mm  | Mill           |
| LM-R20-4300          | AL6063-T6        | 4300 x 40 x 20 mm  | Mill           |
| LM-R20-5200          | AL6063-T6        | 5200 x 40 x 20 mm  | Mill           |
| LM-R20-575           | AL6063-T6        | 575 x 40 x 20 mm   | Mill           |
| LM-R20-5750          | AL6063-T6        | 5750 x 40 x 20 mm  | Mill           |
| LM-R20-660           | AL6063-T6        | 660 x 40 x 20 mm   | Mill           |

## TOP / BOTTOM FIX RAILS



Top / bottom fix rails simplify PV system installation. Made from corrosion-resistant aluminum, they feature slots at both ends, come in various lengths, and have a refined mill finish for seamless integration with seam clamps.

| <b>Product Code:</b> | <b>Material:</b> | <b>Dimensions:</b> | <b>Finish:</b> |
|----------------------|------------------|--------------------|----------------|
| LM-R42-100           | AL6063-T6        | 100 x 34 x 42 mm   | Mill           |
| LM-R42-1000          | AL6063-T6        | 1000 x 34 x 42 mm  | Mill           |
| LM-R42-3150          | AL6063-T6        | 3150 x 34 x 42 mm  | Mill           |
| LM-R42-3300          | AL6063-T6        | 3300 x 34 x 42 mm  | Mill           |
| LM-R42-4150          | AL6063-T6        | 4150 x 34 x 42 mm  | Mill           |
| LM-R42-4400          | AL6063-T6        | 4400 x 34 x 42 mm  | Mill           |
| LM-R42-5150          | AL6063-T6        | 5150 x 34 x 42 mm  | Mill           |
| LM-R42-5450          | AL6063-T6        | 5450 x 34 x 42 mm  | Mill           |
| LM-R42-600           | AL6063-T6        | 600 x 34 x 42 mm   | Mill           |
| LM-R42-6200          | AL6063-T6        | 6200 x 34 x 42 mm  | Mill           |

## TOP FIX PURLINS



Top / side fix rails optimize PV system installation. Made from corrosion-resistant aluminum for durability, they feature slots at both the top and side, come in various lengths, and have a refined mill finish for seamless integration with substructure fix brackets.

| Product Code: | Material: | Dimensions:  | Finish: |
|---------------|-----------|--------------|---------|
| LM-R73-3150   | AL6063-T6 | 3150 x 73 mm | Mill    |
| LM-R73-5150   | AL6063-T6 | 5150 x 73 mm | Mill    |
| LM-R73-5450   | AL6063-T6 | 5450 x 73 mm | Mill    |
| LM-R73-6200   | AL6063-T6 | 6200 x 73 mm | Mill    |
| LM-R73-6750   | AL6063-T6 | 6750 x 73 mm | Mill    |

## EXTRUSIONS



The Rail Splices offers secure and precise connections for various rail types, enhancing the stability and durability of solar mounting systems. The Internal Splice for R73, complete with screws, ensures seamless alignment and robust support for R73 rails. The Rear Splice, designed specifically for R42 and R46 rails, delivers essential reinforcement and stability. These components are ideal for achieving a cohesive and resilient rail setup, essential for long-lasting installations.

| Product Code:   | Material:          | Dimensions:     | Finish:  |
|-----------------|--------------------|-----------------|----------|
| LM-RS-I-R48     | AL6005-T5          | 150 mm          | Anodised |
| LMK-RS-I-R48    | AL6005-T5          | 150 mm          | Anodised |
| LM-RS-I-R73-200 | AL6063-T6          | 73 - 200 mm     | Mill     |
| LM-RS-R         | AL6005-T5 + SUS304 | R42 + R46 Rails | Anodised |



LM-CC

## Rooftop Miscellaneous Items

Our miscellaneous rooftop items is crafted to complement and enhance solar mounting systems by offering adaptable solutions tailored for various roof types. These components are engineered to provide additional flexibility, ensuring stability, adaptability, and ease of installation across a wide range of rooftop environments.

Constructed with durable, high-quality materials, each item is designed for seamless compatibility with diverse mounting setups. This makes them an ideal choice for creating customized, high-performance solar systems that meet the specific needs of each project.

| Product Code:    | Material:          | Dimensions:     | Finish:  |
|------------------|--------------------|-----------------|----------|
| LM-CC            | AL6005-T5 + SUS304 | 50 x 40 x 6 mm  | Anodised |
| LM-SRL-M8+M6     | AL6005-T5 + SUS304 | 80 x 40 x 50 mm | Anodised |
| LMK-INSERT       | EPDM               | 45 x 16 x 3 mm  |          |
| LM-PSC           | SUS304             | 20 x 51 x 3 mm  | Anodised |
| LM-EPDM-130x20x2 | EPDM               | 130 x 20 mm     |          |
| LM-EPDM-80x40    | EPDM               | 80 x 40 mm      |          |
| LM-RB-NT-120     | AL6005-T5          | 120 x 50 x 5 mm | Anodised |
| LM-RB-NT-120-HDG | SUS306             | 120 x 50 x 5 mm | HDG      |
| LM-R20-80-M6-E   | AL6063-T6 + EPDM   | 80 x 40 x 20 mm | Anodised |